



2020



U.S. PRODUCT GUIDE



# TABLE OF CONTENTS

## SPECIFICATIONS & ATTACHMENTS

Lawn Tractors	
REGENT™ Series . . . . .	2
BROADMOOR™ Series . . . . .	9
Yard Tractors	
CONQUEST™ Series. . . . .	17
Garden Tractors	
PRESTIGE™ Series. . . . .	24
LEGACY® XL Series. . . . .	32
Zero Turn Mowers	
COURIER™ Series. . . . .	41
CONTENDER™ XT Series. . . . .	47
CITATION® XT Series . . . . .	50
COBALT™ Series. . . . .	53
COBALT™ LE Series. . . . .	56
ELECTRIC PRESSURE WASHERS . . . . .	59
GAS CLEANING SYSTEMS . . . . .	59
GENERATORS . . . . .	60
INVERTER GENERATORS . . . . .	61
BRIGGS & STRATTON® SNOWTHROWERS . . . . .	62
SIMPLICITY® SNOWTHROWERS . . . . .	64
ATTACHMENT REFERENCE CHARTS. . . . .	68
ALLIED ATTACHMENT & ACCESSORY MANUFACTURERS . . . . .	80

*NOTE: Products eligible for sale in the state of California:  
all pressure washers and snowthrowers*

*All pricing within this guide is subject to change. Refer to published  
price list found on thePowerPortal.com for current pricing.*

# Regent™ Series

<b>REGENT™ SERIES</b>	<b>23/38</b>	<b>25/44</b>
Model Number	2691454	2691668
Engine	724cc Briggs & Stratton Professional Series™ V-Twin 23.0 Gross HP*	724cc Briggs & Stratton Professional Series™ V-Twin 25.0 Gross HP*
Power Rating		
Transmission	Tuff-Torq® K46	Tuff-Torq® K46
Mower Deck/Cutting Width (in.)	38- 2 Blade	44- 3 Blade
Height-of-Cut	Infinite / Electric, 1.75"-4.0"	Infinite / Electric, 1.5"-3.75"
Mower Deck Steel	12 Gauge	12 Gauge
Spindles	Cast-Aluminum	Cast-Aluminum
Seat	15" Mid-Back Vinyl	Premium 15" Mid-Back
Mower Lift	Manual	Manual
Mower Removal	Free Floating™ w/Quick Hitch™	Free Floating™ w/Quick Hitch™
Turning Radius (in.)	14	14
Ground Speed (mph) Fwd/Rev	0-5.5/0-3.0	0-5.5/0-3.0
Front Tires (in.)	15 x 6.0	15 x 6.0
Rear Tires (in.)	20 x 8.0	22 x 10.0
Fuel Capacity (ga.)	3.5	3.5
Suspension	N/A	Rear
Automatic Controlled Traction™	N/A	N/A
Frame	12 Gauge Steel	12 Gauge Steel
<b>MAP Price</b>	<b>\$2,399</b>	<b>\$2,999</b>

\* All power levels are stated gross horsepower at 3600 rpm per SAE J1940 as rated by Briggs & Stratton.

# Regent™ Series FAB

<b>REGENT™ SERIES</b>	<b>23/42 FAB</b>	<b>25/48 FAB</b>	<b>25/48 FAB</b>
Model Number	2691455	2691456	2691669
Engine	724cc Briggs & Stratton Professional Series™ V-Twin		
Power Rating	23.0 Gross HP*	25.0 Gross HP*	25.0 Gross HP*
Transmission	Tuff-Torq® K46	Tuff-Torq® K46	Tuff-Torq® K46
Mower Deck/Cutting Width (in.)	42 Fabricated - 2 Blade	48 Fabricated- 3 Blade	48 Fabricated- 3 Blade
Height-of-Cut	Infinite / Electric, 1.5"-3.75"	Infinite / Electric, 1.5"-4.0"	Infinite / Electric, 1.5"-4.0"
Mower Deck Steel	12 Gauge	10 Gauge	10 Gauge
Spindles	Cast-Aluminum	Cast-Aluminum	Cast-Aluminum
Seat	15" Mid-Back Vinyl	15" Mid-Back Vinyl	Premium 15" Mid-Back
Mower Lift	Manual	Manual	Manual
Mower Removal	Free Floating™ w/Quick Hitch™	Free Floating™ w/Quick Hitch™	Free Floating™ w/Quick Hitch™
Turning Radius (in.)	14	14	14
Ground Speed (mph) Fwd/Rev	0-5.5/0-3.0	0-5.5/0-3.0	0-5.5/0-3.0
Front Tires (in.)	15 x 6.0	15 x 6.0	15 x 6.0
Rear Tires (in.)	20 x 10.0	22 x 10.0	22 x 10.0
Fuel Capacity (ga.)	3.5	3.5	3.5
Suspension	N/A	N/A	Rear
Automatic Controlled Traction™	N/A	N/A	N/A
Frame	12 Gauge Steel	12 Gauge Steel	12 Gauge Steel
<b>MAP Price</b>	<b>\$2,599</b>	<b>\$2,799</b>	<b>\$3,199</b>

\*All power levels are stated gross horsepower at 3600 rpm per SAE J1940 as rated by Briggs & Stratton.

# Regent™ Series

## KEY FEATURES

- Free Floating™ Mower Deck for a beautiful, even cut
- Automatic transmission for car-like operation
- Quick Hitch™ Deck Removal System allows you to quickly remove the mower deck without tools
- Cruise control
- Durable 12-gauge steel frame
- Convenient color-coded controls
- Tight, 14" turning radius for easy maneuvering around obstacles
- Electric height-of-cut adjustment provides adjustment with the flip of a switch
- Rear suspension and premium 15" Mid-Back seats offer enhanced comfort while mowing (models 25/44 - 2691668 and 25/48 2691669)
- LED headlights
- Ball bearings in front wheel
- Frame mounted steel front bumper
- Durable all steel hood construction
- 3 year residential limited warranty\*
- Limited lifetime warranty on 42" and 48" fabricated deck\*

\*See operator's manual for complete warranty details. Length of engine warranty coverage varies by manufacturer.

# Regent™ Series

## COLLECTION SYSTEMS



### 38" Mower Collection System

<b>Product No.</b>	<b>Description</b>	<b>List Price</b>
1696752A	Catcher, Clean Sweep Twin	\$585.00
1691837SM	Weight, Front Counter	149.00
1690555SM (2)	Weight, Rear Wheel, 31 lb.	228.00
		<b>TOTAL \$962.00</b>

(6.5 Bushel Capacity)

#### Optional Equipment

1696450A	Turbo [Req. 1696781]	\$665.00
1696781	Turbo Spacer Kit	\$10.00

### 42" Fabricated Mower Collection System

<b>Product No.</b>	<b>Description</b>	<b>List Price</b>
1696551	Catcher, Clean Sweep Twin	\$585.00
1691837SM	Weight, Front Counter	149.00
1690555SM (2)	Weight, Rear Wheel, 31 lb.	228.00
		<b>TOTAL \$962.00</b>

(6.5 Bushel Capacity)

NOTE: For a list of required attachments, see pages 68-79.

# Regent™ Series

## COLLECTION SYSTEMS



### 48" Fabricated Mower Collection System

<b>Product No.</b>	<b>Description</b>	<b>List Price</b>
1696462A	Catcher, Clean Sweep Triple	\$585.00
1696672A	Deck Boot Adapter	139.00
1691837SM	Weight, Front Counter	149.00
1690555SM (2)	Weight, Rear Wheel, 31 lb.	228.00
		<hr/>
		TOTAL \$1,101.00

(10 Bushel Capacity)

#### Optional Equipment

1696750A	Turbo	\$665.00
----------	-------	----------

### 44" Mower Collection System

<b>Product No.</b>	<b>Description</b>	<b>List Price</b>
1696462A	Catcher, Clean Sweep Triple	\$585.00
1691837SM	Weight, Front Counter	149.00
1690555SM (2)	Weight, Rear Wheel, 31 lb.	228.00
		<hr/>
		TOTAL \$962.00

(10 Bushel Capacity)

#### Optional Equipment

1696450A	Turbo	\$665.00
----------	-------	----------

NOTE: For a list of required attachments, see pages 68-79.



# Regent™ Series

## SNOW REMOVAL SYSTEMS



### 42" Snow Blade

Product No.	Description	List Price
1696092*	42" Snow Blade*	\$653.00**
1691319SM (2)	Weights, 33 lb. (Req. 1694922SM)	228.00
1694922SM	Rear Weight Carrier	95.00
TOTAL		\$976.00

### Optional Equipment

1694921	Soft Side Snow Cab	\$767.00**
1690555SM (2)	Weight, Rear Wheel, 31 lb.	228.00
1690163SM	Chains (20 x 8) Pair	120.00
1695092SM	Chains (22 x 10) Pair	120.00
24515MA	Chains (20 x 10 - 8) Pair	120.00

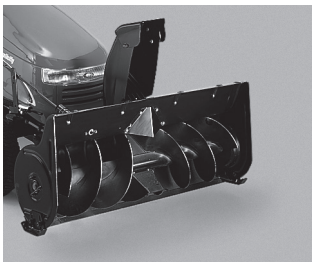
\*Includes Hitch & Lift Lever.

\*\*Snow items subject to prices, terms and conditions of the 2019/2020 Snowthrower Program effective 3/1/20.

NOTE: For a list of required attachments, see pages 68-79.

# Regent™ Series

## SNOW REMOVAL SYSTEM



### 42" Single-Stage Snowthrower

Product No.	Description	List Price
1696423	42" Snowthrower – Single Stage*	\$1,267.00**
1694922SM	Rear Weight Carrier	95.00
1691319SM (2)	Weights, 33 lb. (Req. 1694922SM)	228.00
TOTAL		<u>\$1,590.00</u>

### Optional Equipment

1694921	Soft Side Snow Cab	\$767.00**
1690555SM (2)	Weight, Rear Wheel, 31 lb.	228.00
1690163SM	Chains (20 x 8) Pair	120.00
1695092SM	Chains (22 x 10 - 8) Pair	120.00
24515MA	Chains (22 x 10 - 8) Pair	120.00

\* Includes Hitch & Lift Lever.

\*\* Snow items subject to prices, terms and conditions of the 2019/2020 Snowthrower Program effective 3/1/20.

NOTE: For a list of required attachments, see pages 68-79.

# Broadmoor™ Series

<b>BROADMOOR™ SERIES</b>	<b>23/44</b>	<b>23/48</b>	<b>25/50</b>	<b>25/48 FAB</b>	<b>25/52 FAB</b>
Model Number	2691670	2691671	2691672	2691673	2691674
Engine	724cc Briggs & Stratton Professional Series™ V-Twin w/ ReadyStart®				
Power Rating	23.0 Gross HP*	23.0 Gross HP*	25.0 Gross HP*	25.0 Gross HP*	25.0 Gross HP*
Transmission	Tuff-Torq® K57	Tuff-Torq® K57	Tuff-Torq® K57	Tuff-Torq® K62	High-Speed
Mower Deck/Cut Width (in.)	44-3 Blade	48 Fab-3 Blade	50-3 Blade	48 Fab-3 Blade	52" Fab-3 Blade
Height-of-Cut	Infinite/Electric, 1.5"-4.0"				
Spindles	Cast-Aluminum	Cast-Aluminum	Cast-Aluminum	Cast-Aluminum	Commercial Aluminum
Steering	Manual	Power	Power	Power	Power
Mower Lift	Manual	Manual	Manual	Manual	Hydraulic Power
Mower Removal	Free Floating™ w/ Quick Hitch™				
Turning Radius (in.)	18	18	18	18	18
Ground Speed (mph) Fwd/Rev	0-5.8/0-3.5	0-5.8/0-3.5	0-5.8/0-3.5	0-6.7/0-4.0	0-6.7/0-4.0
Tires (in.) Front/Rear	15x6.0/22x10	15x6.0/22x10	16x6.5-8/22x10	16x6.5-8/22x10	16x6.5/23x10.5
Fuel Capacity (ga.)	3.6	3.6	3.6	3.6	3.6
Suspension	No	No	No	Rear	Rear
Automatic Controlled Traction™	Standard	Standard	Standard	Standard	Standard
Front Axle	Cast-Iron	Cast-Iron	Cast-Iron	Cast-Iron	Cast-Iron
Frame	10 Gauge Steel	10 Gauge Steel	10 Gauge Steel	10 Gauge Steel	10 Gauge Steel
<b>MAP Price</b>	<b>\$3,699</b>	<b>\$3,999</b>	<b>\$4,499</b>	<b>\$4,999</b>	<b>\$5,499</b>

\*All power levels are stated gross horsepower at 3600 rpm per SAE J1940 as rated by Briggs & Stratton.

# Broadmoor™ Series

## KEY FEATURES

- Suspension Comfort System™ for smooth, comfortable mowing (select models)
- Free Floating™ Mower Deck for a beautiful, even cut
- Ergonomic mesh seat to keep you cool and comfortable
- Automatic transmission for automotive-inspired operation
- Push Button Start
- Electric power steering for effortless and precise steering with an 18" turning radius (excludes 2691670)
- Electric height-of-cut adjustment provides adjustment with the flip of a switch
- Automatic Controlled Traction™ maintains superior traction on all terrains
- Integrated Hydraulic Lift to effortlessly raise and lower the deck or snow attachments (25/52)
- Quick Hitch™ Deck Removal System allows you to quickly remove the mower deck without tools
- Durable 10-gauge welded steel frame and steel front bumper
- ReadyStart® Starting System for easy, effortless starting
- Cruise control
- Upgraded instrumentation panel delivers clear visibility to fuel levels, hour meter and maintenance monitoring
- LED headlights
- 3 year residential limited warranty\*
- Limited lifetime warranty on fabricated deck\*

\*See operator's manual for complete warranty details. Length of engine warranty coverage varies by manufacturer.

# Broadmoor™ Series

## COLLECTION SYSTEMS



### 44" Mower Collection System

Product No.	Description	List Price
1696363A	Premium Catcher, Clean Sweep Triple	\$745.00
1696450A	Turbo, 44" & 50"	665.00
1696356A	Catcher Hitch, Tube Group	273.00
1694155SM	Front Weight Carrier	149.00
1692939SM (2)	Quick Attach Weight, 50 lb.	252.00
		<u>TOTAL \$2,084.00</u>

(10 Bushel Capacity)

#### Optional Equipment

1696358A	Catcher, Clean Sweep Triple* (Requires Front Weight(s) & Carrier)	\$585.00
----------	--	----------

\*No Turbo Required.

### 50" Mower Collection System

Product No.	Description	List Price
1696363A	Premium Catcher, Clean Sweep Triple	\$745.00
1696450A	Turbo	665.00
1696356A	Catcher Hitch, Tube Group	273.00
1694155SM	Front Weight Carrier (44", 50", 52")	149.00
1692939SM (2)	Quick Attach Weight, 50 lb.	252.00
		<u>TOTAL \$2,084.00</u>

(10 Bushel Capacity)

#### Optional Equipment

1696358A	Catcher, Clean Sweep Triple* (Requires Front Weight(s) & Carrier)	\$585.00
----------	--	----------

\*No Turbo Required.

NOTE: For a list of required attachments, see pages 68-79.

# Broadmoor™ Series

## COLLECTION SYSTEMS



### 52" Fabricated Mower Collection System

Product No.	Description	List Price
1696363A	Premium Catcher, Clean Sweep Triple	\$745.00
1696429A	Turbo, 52"	665.00
1696356A	Catcher Hitch, Tube Group	273.00
1694155SM	Front Weight Carrier	149.00
1692939SM (2)	Quick Attach Weight, 50 lb.	252.00
		<u>TOTAL \$2,084.00</u>

(10 Bushel Capacity)

### 48" Fabricated Mower Collection System

Product No.	Description	List Price
1696363A	Premium Catcher, Clean Sweep Triple	\$745.00
1696750A	Turbo, 48" Fabricated Mower	665.00
1696356A	Catcher Hitch, Tube Group	273.00
1694155SM	Front Weight Carrier	149.00
1692939SM (2)	Quick Attach Weight, 50 lb.	252.00
		<u>TOTAL \$2,084.00</u>

(10 Bushel Capacity)

#### Optional Equipment

1696358A	Catcher, Clean Sweep Triple* (Requires Front Weight(s) & Carrier)	\$585.00
1696672A	Deck Boot Adapter	139.00

\*No Turbo Required.

NOTE: For a list of required attachments, see pages 68-79.

## Broadmoor™ Series

### COLLECTION SYSTEMS



#### 44" & 50" Mower Wide Body Cart

<b>Product No.</b>	<b>Description</b>	<b>List Price</b>
1696450A	Turbo	\$665.00
1694542	Wide Body Cart Collector	775.00
1696361	Hitch & Tube Kit	255.00
		<hr/>
TOTAL		\$1,695.00

(17 Bushel Capacity)

#### 48" Mower Wide Body Cart

<b>Product No.</b>	<b>Description</b>	<b>List Price</b>
1696750A	Turbo	\$665.00
1694542	Wide Body Cart Collector	775.00
1696361	Hitch & Tube Kit	255.00
		<hr/>
TOTAL		\$1,695.00

(17 Bushel Capacity)

#### 52" Fabricated Mower Wide Body Cart

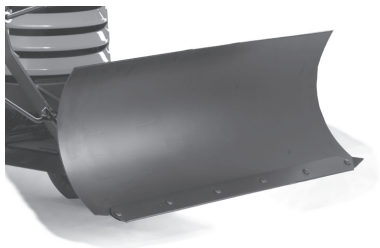
<b>Product No.</b>	<b>Description</b>	<b>List Price</b>
1696429A	Turbo	\$665.00
1694542	Wide Body Cart Collector	775.00
1696361	Hitch & Tube Kit	255.00
		<hr/>
TOTAL		\$1,695.00

(17 Bushel Capacity)

NOTE: For a list of required attachments, see pages 68-79.

# Broadmoor™ Series

## DOZER BLADE & SNOW REMOVAL SYSTEMS



### 48" Dozer/Snow Blade

Product No.	Description	List Price
1695939	48" Snow Blade	\$735.00*
1694147	Hitch	200.00*
1695195	Subframe	480.00*
1694947	Lift Lever Kit^	221.00*
1690095SM	Chains (23 x 10.5 - 12) Pair	120.00
1696323YP	Rear Weight Carrier (50 or 33 lb.)	143.00
1692939SM (2)	Quick Attach Weight, 50 lb.	252.00
		<b>TOTAL \$2,151.00</b>

### Optional Equipment

1695613	Soft Side Snow Cab	\$883.00*
1693160SM (2)	Wheel Weights, 50 lb.	200.00
1691319SM (3)	Weights 33 lb. [Req. 1696323YP]	342.00
1696323YP (1)	Rear Weight Carrier (50 or 33 lb.)	143.00
1695092SM	Chains (22 x 10 - 8) Pair	120.00

\* Snow items subject to prices, terms and conditions of the 2019/20 Snowthrower Program effective 3/1/20.

^Units with the 52" fab deck do not require the 1694947 lift lever.

NOTE: For a list of required attachments, see pages 68-79.



# Broadmoor™ Series

## SNOW REMOVAL SYSTEMS



### 42" Single-Stage Snowthrower

Product No.	Description	List Price
1696425	42" Single-Stage Snowthrower	\$1,067.00*
1695196	Subframe & Hitch	480.00*
1694947	Lift Lever Kit <sup>^</sup>	221.00*
1696323YP	Rear Weight Carrier (50 or 33 lb.)	143.00
1692939SM (2)	Quick Attach Weight, 50 lb.	252.00
		<hr/>
TOTAL		\$2,163.00

### Optional Equipment

1695613	Soft Side Snow Cab	\$883.00*
1691319SM (3)	Weights, 33 lb. [Req. 1696323YP]	342.00
1695092SM	Chains (22 x 10 - 8) Pair	120.00
1690095SM	Chains (23 x 10.5 - 12) Pair	120.00

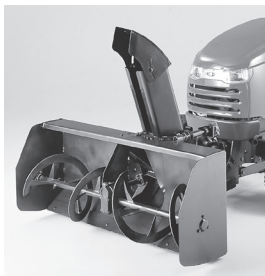
\*Snow items subject to prices, terms and conditions of the 2019/20 Snowthrower Program effective 3/1/20.

<sup>^</sup>Units with the 52" fab deck do not require the 1694947 lift lever.

NOTE: For a list of required attachments, see pages 68-79.

# Broadmoor™ Series

## SNOW REMOVAL SYSTEMS



### 42" Two-Stage Snowthrower

Product No.	Description	List Price
1695360	42" Two-Stage Snowthrower	\$1,514.00*
1695196	Subframe & Hitch	480.00*
1694947	Lift Lever Kit^	221.00*
1696323YP	Rear Weight Carrier (50 or 33 lb.)	143.00
1692939SM (2)	Quick Attach Weight, 50 lb.	252.00
		<u>TOTAL \$2,610.00</u>

### Optional Equipment

1695613	Soft Side Snow Cab	\$883.00*
1691319SM (3)	Weights, 33 lb. [Req. 1696323YP]	342.00
1696323YP (1)	Rear Weight Carrier (50 or 33 lb.)	143.00
1695092SM	Chains (22 x 10 - 8) Pair or 22 x 9.5-12) Pair	120.00
1690095SM	Chains (23 x 10.5 - 12) Pair	120.00

\*Snow items subject to prices, terms and conditions of the 2019/20 Snowthrower Program effective 3/1/20.

^Units with the 52" fab deck do not require the 1694947 lift lever.

NOTE: For a list of required attachments, see pages 68-79.

## Conquest™ Series

CONQUEST™ SERIES	25/50	25/52 FAB
Model Number	2691675	2691676
Engine	724cc Briggs & Stratton® Commercial Series V-Twin, Cyclonic w/ EFM	
Power Rating	25.0 Gross HP*	25.0 Gross HP*
Transmission	Tuff-Torq® K66 High Speed	Tuff-Torq® K66 High Speed
Mower Deck/Cutting Width (in.)	50-3 Blade	52 fabricated- 3 Blade
Height-of-Cut (in.)	Infinite/Electric 1.5" - 4.0"	Infinite/Electric 1.5" - 4.0"
Spindles	Cast-Aluminum	Cast-Aluminum
Mower Lift	Hydraulic Power	Hydraulic Power
Mower Removal	Free Floating™ w/ Quick Hitch™	Free Floating™ w/ Quick Hitch™
Steering	Power	Power w/ Tilt
Turning Radius (in.)	18	18
Ground Speed (mph) Fwd/Rev	0-7.2/0-5.0	0-7.2/0-5.0
Tires (in.) Front/Rear	16 x 6.5/23 x 10.5	16 x 6.5/23 x 10.5
Fuel Capacity (ga.)	3.6	3.6
Suspension	Rear	Rear
Automatic Controlled Traction™	Standard	Standard
Front Axle	Cast-Iron	Cast-Iron
Frame	10 Gauge Steel	10 Gauge Steel
<b>MAP Price</b>	<b>\$6,499</b>	<b>\$6,999</b>

\*All power levels are stated gross horsepower at 3600 rpm per SAE J1940 as rated by Briggs & Stratton.

# Conquest™ Series

## KEY FEATURES

- Suspension Comfort System™ for smooth, comfortable mowing
- High-speed transmission
- Ergonomic mesh seat to keep you cool and comfortable
- Deluxe instrument panel complete with maintenance reminders and push-button starting
- Electric power steering for effortless and precise steering with an 18" turning radius
- Integrated Hydraulic Lift to effortlessly raise and lower the deck or snow attachments
- Available with a 52" Fabricated mower deck offering professional grade durability.
- Free Floating™ Mower Deck for a beautiful, even cut
- Automatic Controlled Traction™ and differential lock for traction support
- Electronic Fuel Management (EFM) for automotive-style starting
- Quick Hitch™ Deck Removal System allows you to quickly remove the mower deck without tools
- Heavy-duty 10-gauge welded steel frame and steel front bumper
- Electric height-of-cut adjustment
- Easy to adjust tilt steering (25/52)
- LED headlights
- 12V DC outlet
- 3 year residential limited warranty\*
- Limited lifetime warranty on 52" fabricated deck\*

\*See operator's manual for complete warranty details. Length of engine warranty coverage varies by manufacturer.

# Conquest™ Series

## COLLECTION SYSTEMS



### 50" Mower Collection System

Product No.	Description	List Price
1696363A	Premium Catcher, Clean Sweep Triple	\$745.00
1696450A	Turbo	665.00
1696356A	Catcher Hitch, Tube Group	273.00
1694155SM	Front Weight Carrier	149.00
1692939SM (2)	Quick Attach Weight, 50 lb.	252.00
		<hr/>
TOTAL		\$2,084.00

(10 Bushel Capacity)

### Optional Equipment

1696358A	Catcher, Clean Sweep Triple* (Requires Front Weight(s) & Carrier)	\$585.00
----------	---	----------

\*No Turbo Required.

### 52" Fabricated Mower Collection System

Product No.	Description	List Price
1696363A	Premium Catcher, Clean Sweep Triple	\$745.00
1696429A	Turbo	665.00
1696356A	Catcher Hitch, Tube Group	273.00
1694155SM	Front Weight Carrier	149.00
1692939SM (2)	Quick Attach Weight, 50 lb.	252.00
		<hr/>
TOTAL		\$2,084.00

(10 Bushel Capacity)

NOTE: For a list of required attachments, see pages 68-79.

# Conquest™ Series

## COLLECTION SYSTEMS



### 50" Mower Wide Body Cart

Product No.	Description	List Price
1696450A	Turbo	\$665.00
1694542	Wide Body Cart Collector	775.00
1695434	Hitch & Tube Kit	255.00
		<u>TOTAL \$1,695.00</u>

(17 Bushel Capacity)

### 52" Fabricated Mower Wide Body Cart

Product No.	Description	List Price
1696429A	Turbo	\$665.00
1694542	Wide Body Cart Collector	775.00
1695434	Hitch & Tube Kit	255.00
		<u>TOTAL \$1,695.00</u>

(17 Bushel Capacity)

NOTE: For a list of required attachments, see pages 68-79.

# Conquest™ Series

## DOZER BLADE & SNOW REMOVAL SYSTEMS



### 48" Dozer/Snow Blade

Product No.	Description	List Price
1695939	48" Snow Blade	\$735.00*
1694147	Hitch	200.00*
1695195	Subframe	480.00*
1690095SM	Chains (23 x 10.5 - 12) Pair	120.00
1696323YP	Rear Weight Carrier (50 or 33 lb.)	143.00
1692939SM (2)	Quick Attach Weight, 50 lb.	252.00
		<u>TOTAL \$1,930.00</u>

### Optional Equipment

1695613	Soft Side Snow Cab	\$883.00*
1693160SM (2)	Wheel Weights, 50 lb.	200.00
1691319SM (3)	Weights 33 lb. [Req. 1696323YP]	342.00
1696323YP (1)	Rear Weight Carrier (50 or 33 lb.)	143.00

\* Snow items subject to prices, terms and conditions of the 2019/20 Snowthrower Program effective 3/1/20.

NOTE: For a list of required attachments, see pages 68-79.

# Conquest™ Series

## SNOW REMOVAL SYSTEMS



### 42" Single-Stage Snowthrower

<b>Product No.</b>	<b>Description</b>	<b>List Price</b>
1696425	42" Single-Stage Snowthrower	\$1,067.00*
1695196	Subframe & Hitch	480.00*
1690095SM	Chains (23 x 10.5 - 12) Pair	120.00
1696323YP	Rear Weight Carrier (50 or 33 lb.)	143.00
1692939SM (2)	Quick Attach Weight, 50 lb.	252.00
	<b>TOTAL</b>	<b>\$2,062.00</b>

### Optional Equipment

1695613	Soft Side Snow Cab	\$883.00*
1693160SM (2)	Wheel Weights, 50 lb.	200.00
1691319SM (3)	Weights, 33 lb. [Req. 1696323YP]	342.00
1696323YP (1)	Rear Weight Carrier (50 or 33 lb.)	143.00

\*Snow items subject to prices, terms and conditions of the 2019/20 Snowthrower Program effective 3/1/20.

NOTE: For a list of required attachments, see pages 68-79.



# Conquest™ Series

## SNOW REMOVAL SYSTEMS



### 42" Two-Stage Snowthrower

<b>Product No.</b>	<b>Description</b>	<b>List Price</b>
1695360	42" Two-Stage Snowthrower	\$1,514.00*
1695196	Subframe & Hitch	480.00*
1690095SM	Chains (23 x 10.5 - 12) Pair	120.00
1696323YP	Rear Weight Carrier (50 or 33 lb.)	143.00
1692939SM (2)	Quick Attach Weight, 50 lb.	252.00
		<u>TOTAL \$2,509.00</u>

### Optional Equipment

1695613	Soft Side Snow Cab	\$883.00*
1693160SM (2)	Wheel Weights, 50 lb.	200.00
1691319SM (3)	Weights, 33 lb. [Req. 1696323YP]	342.00
1696323YP (1)	Rear Weight Carrier (50 or 33 lb.)	143.00

\*Snow items subject to prices, terms and conditions of the 2019/20 Snowthrower Program effective 3/1/20.

NOTE: For a list of required attachments, see pages 68-79.

# Prestige™ Series

<b>PRESTIGE™ SERIES</b>	<b>27.0 Gross HP* 50"</b>	<b>27.0 Gross HP* 52" FAB</b>
Model Number	2691677	2691678
Engine	810cc Briggs & Stratton® Commercial Series V-Twin, Cyclonic w/ EFI	
Power Rating/Drive	27.0 Gross HP* / 2WD	27.0 Gross HP* / 2WD
Transmission	Tuff-Torq® K72 High Speed	
Mower Deck/Cutting Width (in.)	50-3 Blade	
Height-of-Cut (in.)	1.5 – 4.0	
Mower Deck Steel	12 Gauge	
Spindles	Cast-Aluminum	
Mower Lift	Hydraulic Power	
Mower Removal	Free Floating™ w/Quick Hitch™	Free Floating™ w/Quick Hitch™
Steering	Power	Power
Turning Radius (in.)	18	18
Ground Speed (mph) Fwd/Rev	0-8.7/0-3.0	0-8.7/0-3.0
Front/Rear Tires (in.)	16 x 6.5/ 23 x 10.5-12	
Fuel Capacity (ga.)	3.6	3.6
Suspension	Rear	Rear
Auto Controlled Traction™	Standard	Standard
Front Axle	Cast-Iron	
Frame	10 Gauge Steel	
<b>MAP Price</b>	<b>\$8,399</b>	<b>\$8,499</b>

\* All power levels are stated gross horsepower at 3600 rpm per SAE J1940 as rated by Briggs & Stratton.

## **Prestige™ Series**

### **KEY FEATURES**

- Suspension Comfort System™ (SCS™) (2WD models only)
- High-speed transmission (2WD models only)
- 18" high-back cut and sew seat for superior rider comfort
- Deluxe instrument panel complete with maintenance reminders and push-button starting
- Electric power steering with tilt for effortless and precise steering with an 18" turning radius
- Integrated Hydraulic Lift to effortlessly raise and lower the deck or snow attachments
- Quick Hitch™ Deck Removal System allows you to quickly remove the mower deck without tools
- Free Floating™ Mower Deck for a beautiful, even cut
- Automatic Controlled Traction™ and differential lock for traction support
- Electronic Fuel Injection (EFI) for automotive-style starting
- Electric height-of-cut adjustment
- Heavy-duty 10-gauge welded steel frame and steel front bumper
- Tilt steering wheel and cruise control
- 3 year residential limited warranty\*
- Limited lifetime warranty on 52" fabricated deck\*

\*See operator's manual for complete warranty details. Length of engine warranty coverage varies by manufacturer.

# Prestige™ Series

## COLLECTION SYSTEMS



### 50" Mower Collection System

Product No.	Description	List Price
1696363A	Premium Catcher, Clean Sweep Triple	\$745.00
1696450A	Turbo	665.00
1696356A	Catcher Hitch, Tube Group	273.00
1694155SM	Front Weight Carrier (50 or 33 lb.)	149.00
1692939SM (2)	Quick Attach Weight, 50 lb.	252.00
		<b>TOTAL \$2,084.00</b>

(10 Bushel Capacity)

### Optional Equipment

1696358A	Catcher, Clean Sweep Triple* (Requires Front Weight(s) & Carrier)	\$585.00
----------	---	----------

\*No Turbo Required.

NOTE: For a list of required attachments, see pages 68-79.

# Prestige™ Series

## COLLECTION SYSTEMS



### 52" Fabricated Mower Collection System

Product No.	Description	List Price
1696363A	Premium Catcher, Clean Sweep Triple	\$745.00
1696429A	Turbo, 52"	665.00
1696356A	Catcher Hitch, Tube Group	273.00
1694155SM	Front Weight Carrier (50 or 33 lb.)	149.00
1692939SM (2)	Quick Attach Weight, 50 lb.	252.00
<b>TOTAL</b>		<b>\$2,084.00</b>

(10 Bushel Capacity)

NOTE: For a list of required attachments, see pages 68-79.

## Prestige™ Series

### COLLECTION SYSTEMS



#### 50" Mower Wide Body Cart

<b>Product No.</b>	<b>Description</b>	<b>List Price</b>
1694542	Wide Body Cart Collector	\$775.00
1696450A	Turbo	665.00
1695434	Hitch & Tube Kit	255.00
		<hr/>
TOTAL		\$1,695.00

(17 Bushel Capacity)

#### 52" Fabricated Mower Wide Body Cart

<b>Product No.</b>	<b>Description</b>	<b>List Price</b>
1694542	Wide Body Cart Collector	\$775.00
1696429A	Turbo	665.00
1695434	Hitch & Tube Kit	255.00
		<hr/>
TOTAL		\$1,695.00

(17 Bushel Capacity)

NOTE: For a list of required attachments, see pages 68-79.

## Prestige™ Series

### DOZER BLADE & SNOW REMOVAL SYSTEMS



#### 48" Dozer/Snow Blade

Product No.	Description	List Price
1695939	48" Snow Blade	\$735.00*
1694147	Hitch	200.00*
1695195	Subframe	480.00*
1696323YP	Rear Weight Carrier (50 or 33 lb.)	143.00
1692939SM (2)	Quick Attach Weight, 50 lb.	252.00
		<u>TOTAL \$1,810.00</u>

#### Optional Equipment

1695613	Soft Side Snow Cab	\$883.00*
1693160SM (2)	Wheel Weights, 50 lb.	200.00
1691319SM (3)	Weights, 33 lb. [Req. 1696323YP]	342.00
1696323YP (1)	Rear Weight Carrier (50 or 33 lb.)	143.00

\*Snow items subject to prices, terms and conditions of the 2019/20 Snowthrower Program effective 3/1/20.

NOTE: For a list of required attachments, see pages 68-79.

# Prestige™ Series

## SNOW REMOVAL SYSTEMS



### 42" Single-Stage Snowthrower

<b>Product No.</b>	<b>Description</b>	<b>List Price</b>
1696425	42" Single-Stage Snowthrower	\$1,067.00*
1695196	Subframe & Hitch*	480.00*
1696323YP	Rear Weight Carrier (50 or 33 lb.)	143.00
1692939SM (2)	Quick Attach Weight, 50 lb.	252.00
		<u>TOTAL \$1,942.00</u>

### Optional Equipment

1695613	Soft Side Snow Cab	\$883.00*
1693160SM (2)	Wheel Weights, 50 lb.	200.00
1691319SM (3)	Weights, 33 lb. [Req. 1696323YP]	342.00
1696323YP (1)	Rear Weight Carrier (50 or 33 lb.)	143.00

\*Snow items subject to prices, terms and conditions of the 2019/20 Snowthrower Program effective 3/1/20.

NOTE: For a list of required attachments, see pages 68-79.



## Prestige™ Series

### SNOW REMOVAL SYSTEMS



#### 42" Two-Stage Snowthrower

Product No.	Description	List Price
1695360	42" Two-Stage Snowthrower	\$1,514.00*
1695196	Subframe & Hitch*	480.00*
1696323YP	Rear Weight Carrier (50 or 33 lb.)	143.00
1692939SM (2)	Quick Attach Weight, 50 lb.	252.00
TOTAL		\$2,389.00

#### Optional Equipment

1695613	Soft Side Snow Cab	\$883.00*
1693160SM (2)	Wheel Weights, 50 lb.	200.00
1691319SM (3)	Weights, 33 lb. [Req. 1696323YP]	342.00
1696323YP (1)	Rear Weight Carrier (50 or 33 lb.)	143.00

\*Snow items subject to prices, terms and conditions of the 2019/20 Snowthrower Program effective 3/1/20.

NOTE: For a list of required attachments, see pages 68-79.

# Legacy® XL Series

<b>LEGACY® XL SERIES</b>	<b>31.0 Gross HP* - 2WD</b>	<b>33.0 Gross HP* - 4WD w/EFI</b>	<b>33.0 Gross HP* - 4WD w/EFI &amp; PTO</b>
Model Number	2691522	2691523	2691524
Engine	885cc Briggs & Stratton Vanguard™ Big Block™ V-Twin	885cc Briggs & Stratton Vanguard™ Big Block™ V-Twin w/ EFI	
Power Rating	31.0 Gross HP*	33.0 Gross HP* with EFI	
Drive	2WD	4WD	4WD
Transmission	Tuff-Torc® K92	Tuff-Torc® K92 (Rear) w/ Shaft-Driven Front Axle	
540 Rear PTO 3-Pt Hitch	No	No	Yes
Front Axle	Cast-Iron	Cast-Iron	Cast-Iron
Frame	7 Gauge Steel	7 Gauge Steel	7 Gauge Steel
ROPS (Folding)	Yes	Yes	Yes
Mower Deck/Cutting Width (in.)	Sold Separately: 52 or 61 Fabricated		
Height-of-Cut (in.)	Infinitive-Electric, 1.5 – 4.0	Infinitive-Electric, 1.5 – 4.0	Infinitive-Electric, 1.5 – 4.0
Turning Radius (in.)	28	35-2WD/55-4WD	35-2WD/55-4WD
Ground Speed (mph) Fwd/Rev	0-9/0-5.5	0-9/0-5.5	0-9/0-5.5
Front Tires (in.)	18 x 8 (4 Ply Turf)	18 x 8 (4 Ply Field Trac)	18 x 8 (4 Ply Field Trac)
Rear Tires (in.)	26 x 12.0 (4 Ply Turf)	26 x 12.0 (4 Ply Field Trac)	26 x 12.0 (4 Ply Field Trac)
Fuel Capacity (ga.)	6	6	6
<b>MAP</b>	<b>\$9,199</b>	<b>\$11,699</b>	<b>\$12,599</b>

\*All power levels are stated gross horsepower at 3600 rpm per SAE J1940 as rated by Briggs & Stratton.

# Legacy® XL Series

<b>LEGACY® XL MOWER DECKS</b>	<b>1696782</b>	<b>1696699</b>
Cutting Width(in.)	52 Fabricated	61 Fabricated
Mower Deck	Free Floating, Shaft-Driven	Free Floating, Drive-Over, Shaft-Driven
Arbor Housing	Commercial-Aluminum	Commercial-Aluminum
Height-of-Cut (in.)	Infinite-Electric, 1.5-4.0	Infinite-Electric, 1.5-4.0
Mower Lift	Hydraulic	Hydraulic
<b>MAP</b>	<b>\$2,299</b>	<b>\$2,599</b>

# Legacy® XL Series

## KEY FEATURES

- 4-way joystick attachment control and numerous compatible attachments allow you to accomplish more yard chores
- Large diameter rear axles handle up to 1,800 lbs. axle weight
- Front/rear diverter switch for hydraulic power front, mid, and rear with just a push of a button
- Power steering
- Foldable ROPS with adjustable utility light
- Internal hydraulic PTO for powering the mower deck and attachments
- Quick Hitch™ Deck Removal System allows you to quickly remove the mower deck without tools (52" deck)
- Drive over deck for fast, simplified, single-person installation (61" deck)
- Automatic Controlled Traction™ and differential lock for traction support
- Electronic Fuel Injection (EFI) for easy automotive-style starting on 2691523 and 2691524
- Electric height-of-cut adjustment
- Heavy-duty 7-gauge welded steel frame
- Intuitive dash display includes height-of-cut indicator
- Commercial-style seat provides operator comfort
- 12-volt DC outlet
- 3 year residential limited warranty\*
- Limited lifetime warranty on fabricated deck\*

\*See operator's manual for complete warranty details. Length of engine warranty coverage varies by manufacturer.

# Legacy® XL Series

## COLLECTION SYSTEMS



### 52" or 61" Fabricated Mower Collection System

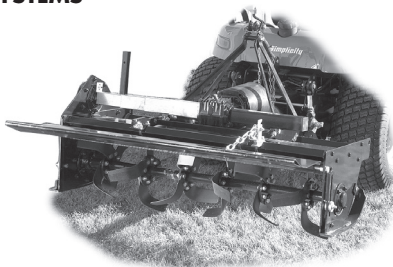
<b>Product No.</b>	<b>Description</b>	<b>List Price</b>
1696783 (52")	Turbo	\$665.00
1696366 (61")		
1694389A	Clean Sweep Triple Collector	692.00
1694390	Catcher Hitch, Tube Group	183.00
1694409SM	Front Weight Carrier (50 or 33 lb.)	119.00
1692939SM (2)	Quick Attach Weight, 50 lb.	252.00
	<b>TOTAL</b>	<b>\$1,911.00</b>

(10 Bushel Capacity)

NOTE: For a list of required attachments, see pages 68-79.

# Legacy® XL Series

## TILLER SYSTEMS



### 31hp\* 2WD or 33hp\* 4WD w/o 540 Rear PTO and 3 Point Hitch Standard w/50" Tiller, 540 RPM

Product No.	Description	List Price
1694405	50" Tiller, 540 RPM	\$2,705.00
1694391	3-Point Hitch	612.00
1696071	Rear PTO 540 RPM	1,060.00
1694409SM	Weight Carrier, Front	119.00
1692939SM (4)	Quick Attach Weight, 50 lb.	504.00
	<b>TOTAL</b>	<b>\$5,000.00</b>

### 33 hp\* 4WD Tractors with 540 Rear PTO and 3 Point Hitch Standard

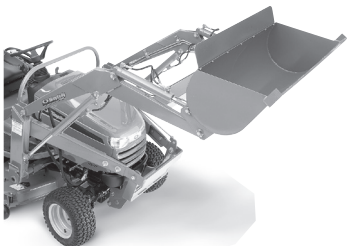
Product No.	Description	List Price
1694405	50" Tiller, 540 RPM	\$2,705.00
1694409SM	Weight Carrier, Front	119.00
1692939SM (4)	Quick Attach Weight, 50 lb.	504.00
	<b>TOTAL</b>	<b>\$3,328.00</b>

\*All power levels are stated gross horsepower at 3600 rpm per SAE J1940 as rated by Briggs & Stratton.

NOTE: For a list of required attachments, see pages 68-79.

# Legacy® XL Series

## FRONT LOADER SYSTEMS



### Front-End Loader (Lift Capacity 500 lb.)

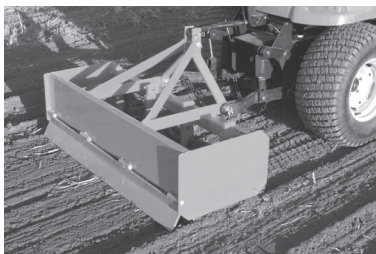
<b>Product No.</b>	<b>Description</b>	<b>List Price</b>
1696678	Loader w/48" Bucket* (Orange) (Includes Ballast Box)	\$3,795.00
1693160SM (2)	Rear Wheel Weights, 50 lb.	200.00
	<b>TOTAL</b>	<b>\$3,995.00</b>

\*Contact HitchDoc (800-446-8222) for Service Parts, Service Information and Technical Literature. Loader not recommended for heavy-duty commercial use.

NOTE: For a list of required attachments, see pages 68-79.

# Legacy® XL Series

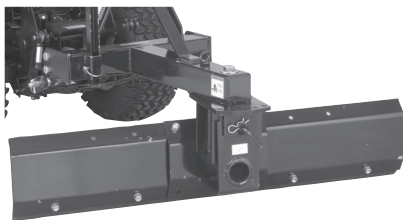
## BOX SCRAPER/SCARIFIER



### Box Scraper/Scarifier

Product No.	Description	List Price
1694551	Box Scraper/Scarifier 48"	\$1,021.00
1694391	3-Point Hitch	612.00
1694409SM	Front Weight Carrier	119.00
1692939SM (3)	Quick Attach Weight, 50 lb.	378.00
		<u>TOTAL \$2,130.00</u>

## REAR SCRAPER BLADE



### Rear Scraper Blade

Product No.	Description	List Price
1695709	Rear Scraper Blade, 60"	\$932.00
1694391	3-Point Hitch	612.00
1694409SM	Front Weight Carrier	119.00
1692939SM (4)	Quick Attach Weight, 50 lb.	504.00
		<u>TOTAL \$2,167.00</u>

NOTE: For a list of required attachments, see pages 68-79.



# Legacy® XL Series

## DOZER BLADE & SNOW REMOVAL SYSTEMS



### 60" Hydraulic Angling Blade

<b>Product No.</b>	<b>Description</b>	<b>List Price</b>
1694387	60" Hyd. Ang. Blade	\$1,066.00
1692562SM	Chains (26x12-12)	142.00
1692941SM	Rear Weight Carrier**	107.00
1692939SM (2)	Quick Attach Weight, 50 lb.	252.00
1694395	Hitch/Subframe	989.00*
TOTAL		\$2,556.00

### Optional Equipment

1697130	Soft Side Snow Cab	\$1,029.00*
1693160SM (2)	Rear Wheel Weights, 50 lb.	200.00

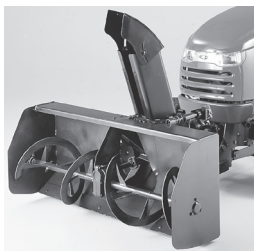
\*Snow items subject to prices, terms and conditions of the 2019/20 Snowthrower Program effective 3/1/20.

\*\*Not compatible with 3-Point Hitch or ROPS (1694400).

NOTE: For a list of required attachments, see pages 68-79.

# Legacy® XL Series

## SNOW REMOVAL SYSTEMS



### 47" Two-Stage Snowthrower

<b>Product No.</b>	<b>Description</b>	<b>List Price</b>
1696422	47" Two-Stage Snowthrower	\$2,399.00*
1692562SM	Chains (26 x 12-12)	142.00
1692941SM	Rear Weight Carrier**	107.00
1692939SM (2)	Quick Attach Weight, 50 lb.	252.00
1694395	Hitch/Subframe	989.00*
		<hr/>
TOTAL		\$3,889.00

### Optional Equipment

1697130	Soft Side Snow Cab	\$1,029.00*
1693160SM (2)	Rear Wheel Weights, 50 lb.	200.00

\* Snow items subject to prices, terms and conditions of the 2019/20 Snowthrower Program effective 3/1/20.

\*\* Not compatible with 3-Point Hitch.

NOTE: For a list of required attachments, see pages 68-79.

# COURIER™ Zero Turn Series

COURIER™ Series	19/36 FAB	23/44	23/36 FAB	18/36 FAB
Model Number	2691501	2691502	2691519	2691520
Engine	500cc Briggs & Stratton Professional Series™ Single Cylinder	724cc Briggs & Stratton Professional Series™ V-Twin OHV	603cc Kawasaki™ V-Twin OHV	603cc Kawasaki™ V-Twin OHV
Power Rating	19.0 Gross HP*	23.0 Gross HP**	23.0 Gross HP*	18.0 Gross HP**
Transaxles	Hydro-Gear® EZT®	Hydro-Gear® EZT®	Hydro-Gear® EZT®	Hydro-Gear® EZT®
Ground Speed (mph) Fwd/Rev	0-6 / 0-3	0-6 / 0-3	0-6 / 0-3	0-6 / 0-3
Frame	12 Gauge Steel	12 Gauge Steel	12 Gauge Steel	12 Gauge Steel
Spindles	Cast Aluminum	Cast Aluminum	Cast Aluminum	Cast Aluminum
Mower Deck/Cutting Width (in.)	36	44	36	36
Mower Deck Steel	12 Gauge Steel	12 Gauge Steel	12 Gauge Steel	12 Gauge Steel
Mower Deck Lift	Manual – Foot Operated	Manual – Foot Operated	Manual – Foot Operated	Manual – Foot Operated
Anti-Scalp Wheels	2 Front, Rear Roller	2 Front, Rear Roller	2 Front, Rear Roller	2 Front, Rear Roller
Suspension	None	None	None	None
Seat	High-Back Mesh	High-Back Mesh	High-Back Mesh	High-Back Mesh
Cargo Bed***	None	Optional Accessory	Optional Accessory	Optional Accessory
Rear Bumper	Wrap Around Steel	Wrap Around Steel	Wrap Around Steel	Wrap Around Steel
Front/Rear Tires (in.)	11x4-5 / 18x6.5-8	11x4-5 / 18x6.5-8	11x4-5 / 18x6.5-8	11x4-5 / 18x6.5-8
<b>MAP Price</b>	<b>\$2,499</b>	<b>\$2,699</b>	<b>\$2,799</b>	<b>\$2,899</b>

\* All Power Levels are Stated Gross Horsepower at 3600 RPM per SAE J1940 As Rated By Briggs & Stratton. \*\* All Power Levels are Provided By Kawasaki. \*\*\* Cargo bed capacity is currently being tested but is expected to be 50-lb limit. Weight capacity will be confirmed prior to shipment and listed in all marketing communications. Do not overload; do not carry passengers. See operator's manual for details.

# COURIER™ Zero Turn Series

COURIER™ Series	23/42 FAB	21.5/42 FAB	23/48 FAB
Model Number	2691657	2691658	2691659
Engine	724cc Briggs & Stratton Professional Series™ V-Twin OHV	726cc Kawasaki™ V-Twin OHV	724cc Briggs & Stratton Professional Series™ V-Twin OHV
Power Rating	23.0 Gross HP*	21.5 Gross HP*	23.0 Gross HP*
Transaxles	Hydro-Gear® EZT®	Hydro-Gear® EZT®	Hydro-Gear® EZT®
Ground Speed (mph) Fwd/Rev	0-7 / 0-4	0-7 / 0-4	0-7 / 0-4
Frame	12 Gauge	12 Gauge	12 Gauge
Spindles	Cast-Aluminum	Cast-Aluminum	Cast-Aluminum
Mower Deck/Cutting Width (in.)	42 Fabricated- 2 Blade	42 Fabricated- 2 Blade	48 Fabricated- 3 Blade
Mower Deck Steel	12 Gauge Steel	12 Gauge Steel	12 Gauge Steel
Mower Deck Lift	Manual – Foot Operated	Manual – Foot Operated	Manual – Foot Operated
Anti-Scalp Wheels	Rear Roller	Rear Roller	2 Front, Rear Roller
Suspension	Front	Front	Front & Rear
Seat	High-Back Mesh	High-Back Mesh	High-Back Mesh
Cargo Bed**	Optional Accessory	Optional Accessory	Standard
Rear Bumper	Wrap Around Steel	Wrap Around Steel	Wrap Around Steel
Front/Rear Tires (in.)	11x6-5 / 20x8-8	11x6-5 / 20x8-8	11x6-5 / 20x10-8
<b>MAP Price</b>	<b>\$2,999</b>	<b>\$3,199</b>	<b>\$3,799</b>

\*All power levels are stated gross horsepower at 3600 rpm per SAE J1940 as rated by Briggs & Stratton.

\*\*All Power Levels are Provided By Kawasaki

\*\*\*Cargo bed capacity is currently being tested but is expected to be 50-lb limit. Weight capacity will be confirmed prior to shipment and listed in all marketing communications. Do not overload; do not carry passengers. See operator's manual for details.

# COURIER™ Zero Turn Series

COURIER™ Series	21.5/48 FAB	25/52 FAB	21.5/52 FAB
Model Number	2691660	2691661	2691662
Engine	726cc Kawasaki™ V-Twin OHV	724cc Briggs & Stratton Professional Series™ V-Twin OHV	726cc Kawasaki™ V-Twin OHV
Power Rating	21.5 Gross HP*	25.0 Gross HP*	21.5 Gross HP*
Transaxles	Hydro-Gear® EZT®	Hydro-Gear® ZT-2800	Hydro-Gear® ZT-2800
Ground Speed (mph) Fwd/Rev	0-7 / 0-4	0-8 / 0-4	0-8 / 0-4
Frame	12 Gauge	12 Gauge	12 Gauge
Spindles	Cast-Aluminum	Cast-Aluminum	Cast-Aluminum
Mower Deck/Cutting Width (in.)	48 Fabricated-3 Blade	52 Fabricated-3 Blade	52 Fabricated-3 Blade
Mower Deck Steel	12 Gauge Steel	10 Gauge Steel	10 Gauge Steel
Mower Deck Lift	Manual – Foot Operated	Manual – Foot Operated	Manual – Foot Operated
Anti-Scalp Wheels	2 Front, Rear Roller	2 Front, Rear Roller	2 Front, Rear Roller
Suspension	Front & Rear	Front & Rear	Front & Rear
Seat	High-Back Mesh	High-Back Mesh	High-Back Mesh
Cargo Bed**	Standard	Standard	Standard
Rear Bumper	Wrap Around Steel	Wrap Around Steel	Wrap Around Steel
Front/Rear Tires (in.)	11x6-5 / 20x10-8	11x6-5 / 20x10-10	11x6-5 / 20x10-10
<b>MAP Price</b>	<b>\$3,999</b>	<b>\$4,299</b>	<b>\$4,499</b>

\*All power levels are stated gross horsepower at 3600 rpm per SAE J1940 as rated by Briggs & Stratton.

\*\*All Power levels are Provided By Kawasaki

\*\*\*Cargo bed capacity is currently being tested but is expected to be 50-lb limit. Weight capacity will be confirmed prior to shipment and listed in all marketing communications. Do not overload; do not carry passengers. See operator's manual for details.

## COURIER™ Zero Turn Series



### KEY FEATURES

- Suspension Comfort System™ for smooth, comfortable mowing (select models)
- Ergonomic mesh seat to keep you cool and comfortable
- Integrated rear cargo bed\* adds utility out in the yard (select models)
- 36" deck models fit easily through standard gate openings and navigate around challenging landscaping easily
- Hydro-Gear® EZT® or ZT-2800® Transaxles
- Compact models are 2" shorter, delivering more agile handling and a smaller storage footprint
- Commercially-inspired features such as a fully-welded steel frame & thick-walled front axle
- Foot operated height-of-cut easily lifts the mower deck
- Electric PTO switch
- Heavy-duty deep profile or fabricated mower deck options
- Integrated parking brake
- Available third-party cargo bed\* accessories for even more functionality (optional on various models)
- 3 year residential limited warranty\*\*
- Limited lifetime warranty on fabricated deck\*\*

\*50-lb. capacity, do not overload; do not carry passengers. Standard on most models. See operator's manual for details.

\*\*See operator's manual for complete warranty details. Length of engine warranty coverage varies by manufacturer.

# COURIER™ Zero Turn Series

## COLLECTION SYSTEM



### 42", 44", 48" or 52" Mower Collection System

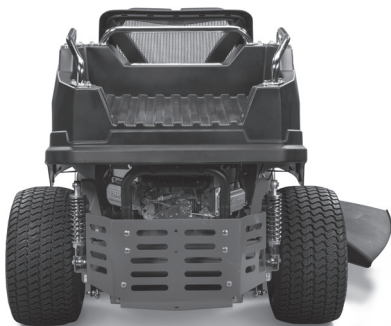
<b>Product No.</b>	<b>Description</b>	<b>List Price</b>
1697100	Twin Catcher*	\$460.00
1696669A	42" Bagging Boot	\$139.00
1696670A	44" Bagging Boot	\$139.00
1696672A	48" Bagging Boot	\$139.00
1696768A	52" Turbo	\$665.00

\*Includes Tube, Front Counter Weights & Rear Bumper. Requires separate boot adapter kit. Turbo required for 52" mower deck. Cargo bed must also be removed to properly install catcher.

NOTE: For a list of required attachments, see pages 68-79.

# COURIER™ Zero Turn Series

## CARGO BED



### Optional Cargo Bed

<b>Product No.</b>	<b>Description</b>	<b>List Price</b>
1696692	Cargo Bed <sup>^</sup>	\$299.00

### Optional Equipment

<b>Product No.</b>	<b>Description</b>	<b>List Price</b>
1687855YP	RHINO GRIP-Single (Kolpin 21500) (Use with 1696692 CARGO BED <sup>^</sup> )	\$30.00
1687856YP	RHINO GRIP-Ratcheting (Kolpin 21540) (Use with 1696692 CARGO BED <sup>^</sup> )	\$60.00

<sup>^</sup>50 lb. capacity, do not overload; do not carry passengers. See operator's manual for details. Additional cargo bed accessories sold separately.

NOTE: For a list of required attachments, see pages 68-79.



# CONTENDER™ XT Zero Turn Series

<b>CONTENDER™ XT ZERO TURN SERIES</b>	<b>25/48 FAB</b>	<b>25/52FAB</b>	<b>25/61 FAB</b>
Model Number	5901742	5901743	5901744
Engine	724cc Briggs & Stratton® Commercial Series V-Twin OHV		
Power Rating	25.0 Gross HP*	25.0 Gross HP*	25.0 Gross HP*
Transaxles	Hydro-Gear® ZT-3200™	Hydro-Gear® ZT-3200™	Hydro-Gear® ZT-3200™
Ground Speed (mph) Fwd/Rev	0-9 / 0-4	0-9 / 0-4	0-9 / 0-4
Frame	11 Gauge Steel	11 Gauge Steel	11 Gauge Steel
Spindles	Commercial-Aluminum	Commercial-Aluminum	Commercial-Aluminum
Mower Deck/Cutting Width (in.)	48	52	61
Mower Deck Steel	10 Gauge Steel	10 Gauge Steel	10 Gauge Steel
Mower Deck Lift	Manual - Foot Operated	Manual - Foot Operated	Manual - Foot Operated
Anti-Scalp Wheels	4 Front, Rear Roller	4 Front, Rear Roller	4 Front, Rear Roller
Suspension	Front & Rear	Front & Rear	Front & Rear
Seat	High-Back with Arm Rests	High-Back with Arm Rests	High-Back with Arm Rests
Rear Bumper	Wrap Around Steel	Wrap Around Steel	Wrap Around Steel
Front/Rear Tires (in.)	13x6.5-6 / 11x4	13x6.5-6 / 13x5	13x6.5-6 / 13x5
<b>MAP Price</b>	<b>\$5,699</b>	<b>\$5,799</b>	<b>\$6,799</b>

\*All power levels are stated gross horsepower at 3600 rpm per SAE J1940 as rated by Briggs & Stratton.

## CONTENDER™ XT Zero Turn Series



### KEY FEATURES

- Commercial-grade Hydro-Gear® ZT-3200™ Transaxles
- Features adjustable rear coil-over shocks and a pivoting front axle with shocks for increased comfort and mowing productivity
- Rear bumper to protect engine and operating components from damage
- 10-position foot operated height-of-cut easily lifts the mower deck
- High-back seat with arm rests for comfort
- Electric PTO switch
- Roll over protective structure (ROPS)
- 3 year residential limited warranty\*
- Limited lifetime warranty on fabricated decks\*

\*See operator's manual for complete warranty details. Length of engine warranty coverage varies by manufacturer.

# CONTENDER™ XT Zero Turn Series

## COLLECTION SYSTEM



### 52" & 61" Fabricated Mower Collection System

<b>Product No.</b>	<b>Description</b>	<b>List Price</b>
5600778	TURBO-Pro™ Blower and 2-Bag Hard Top Catcher (48")*	\$2,000.00
5601095	TURBO-Pro™ Blower and 2-Bag Hard Top Catcher (52")*	\$2,000.00
5601161	TURBO-Pro™ Blower and 2-Bag Hard Top Catcher (61")*	\$2,000.00
5600783	TURBO-Pro™ Blower and 3-Bag Hard Top Catcher (52")*	\$2,400.00

\*Includes mount and front weights.

NOTE: For a list of required attachments, see pages 68-79.

## Citation® XT Zero Turn Series

<b>CITATION® XT ZERO TURN SERIES</b>	<b>27/52 FAB</b>	<b>27/61 FAB</b>
Model Number	5901779	5901780
Engine	810cc Briggs & Stratton® Commercial Series V-Twin OHV	810cc Briggs & Stratton® Commercial Series V-Twin OHV
Power Rating	27.0 Gross HP*	27.0 Gross HP*
Transaxles	Hydro-Gear® ZT-3400®	Hydro-Gear® ZT-3400®
Ground Speed (mph) Fwd/Rev	0-10 / 0-5	0-10 / 0-5
Frame	11 Gauge	11 Gauge
Spindles	Commercial-Aluminum	Commercial-Aluminum
Mower Deck/Cutting Width (in.)	52 Fabricated-3 Blade	61 Fabricated-3 Blade
Mower Deck Steel	10 Gauge	10 Gauge
Mower Deck Lift	Manual – Foot Operated	Manual – Foot Operated
Anti-Scalp Wheels	2 Front, Rear Roller	6 Front, Rear Roller
Suspension	Front & Rear	Front & Rear
Seat	Premium Adjustable Seat with Armrests	Premium Adjustable Seat with Armrests
Rear Bumper	Wrap Around Steel	Wrap Around Steel
Front/Rear Tires (in.)	13x6.5-6 / 23x10.5-12	13x6.5-6 / 23x10.5-12
<b>MAP Price</b>	<b>\$7,399</b>	<b>\$7,899</b>

\*All power levels are stated gross horsepower at 3600 rpm per SAE J1940 as rated by Briggs & Stratton.

## Citation XT™ Zero Turn Series



### KEY FEATURES

- Four-wheel suspension system for a smoother ride and faster cut
- Fabricated mower deck provides added durability for years of mowing
- Commercial-grade spindles
- Infinitely variable speed control from 0-10mph forward speed
- Commercial-grade Hydro-Gear® ZT-3400® transaxles
- Rear bumper to protect engine and operating components from damage
- 16-position height-of-cut adjustment for quick cutting height adjustments
- 23" rear, turf tread tires for a smooth ride and less turf damage
- Premium adjustable seat for operator comfort
- Electric PTO switch
- Foldable roll over protective structure (ROPS)
- 4 year limited warranty (48 months) or 500 hours, whichever occurs first. Unlimited hours during the first 2 years (24 months). Coil-over-shocks and all suspension related components are covered for 4 years (48 months) unlimited hours. Belts, tires, brake pads, battery, blades: 90 days.
- Limited lifetime warranty on fabricated deck

^See operator's manual for complete warranty details. Length of engine warranty coverage varies by manufacturer.

# Citation® XT Zero Turn Series

## COLLECTION SYSTEM



### 23 & 27 hp w/52" TURBO-Pro™ Triple Collector

<b>Product No.</b>	<b>Description</b>	<b>List Price</b>
5600783	TURBO-Pro™ Blower and 3-Bag Hard Top Catcher (52)*	\$2,400.00

### 27 hp w/61" TURBO-Pro™ Triple Collector

<b>Product No.</b>	<b>Description</b>	<b>List Price</b>
5600784	TURBO-Pro™ Blower and 3-Bag Hard Top Catcher (61)*	\$2,400.00

\*Includes mount and front weights.

NOTE: For a list of required attachments, see pages 68-79.

## Cobalt™ Zero Turn Series

<b>COBALT™ ZERO TURN</b>	<b>26/61 FAB</b>	<b>28/61 FAB</b>
Model Number	5901597	5901748
Engine	810cc Briggs & Stratton Vanguard™ Big Block™ V-Twin OHV w/ Carburetor	810cc Briggs & Stratton Vanguard™ V-Twin OHV w/ EFI w/ Oil Guard™
Power Rating	26.0 Gross HP*	28.0 Gross HP*
Transaxles	Hydro-Gear® ZT-4400™	Hydro-Gear® ZT-4400™
Ground Speed (mph) Fwd/Rev	0-10 / 0-5	0-10 / 0-5
Frame	11 Gauge	11 Gauge
Spindles	Cast-Iron	Cast-Iron
Mower Deck/Cutting Width (in.)	61 Fabricated– 3 Blade	61 Fabricated– 3 Blade
Mower Deck Steel	10 Gauge	10 Gauge
Mower Deck Lift	Manual – Foot Operated	Manual – Foot Operated
Anti-Scalp Wheels	6 Front, Rear Roller	6 Front, Rear Roller
Suspension	Front & Rear	Front & Rear
Seat	Premium Adjustable Seat	Suspension Seat
Rear Bumper	Wrap Around Steel	Wrap Around Steel
Front/Rear Tires (in.)	13x6.5 / 24x12-12	13x6.5 / 24x12-12
<b>MAP Price</b>	<b>\$9,899</b>	<b>\$10,499</b>

\*All power levels are stated gross horsepower at 3600 rpm per SAE J1940 as rated by Briggs & Stratton.

## Cobalt™ Zero Turn Series



### KEY FEATURES

- Commercial-grade Hydro-Gear® ZT-4400™ transaxles
- Heavy-duty fabricated mower deck, for a lifetime of mowing
- 24" rear, turf tread tires for a smooth ride and less turf damage
- Adjustable Four-wheel suspension system for a smoother ride and faster cut
- 16-position height-of-cut adjustment allows you to adjust your cutting height
- Electric PTO switch
- Infinitely variable speed control from 0-10mph forward speed
- Extended run time with twin fuel tanks - 11 gallon capacity
- Deep cushion, high-back seat with armrests and adjustable steering levers
- Rear bumper to protect engine and operating components from damage
- Foldable roll over protective structure (ROPS)
- Now features the innovative Oil Guard™ System - 500 hours until your next oil change (28/61)
- 4 year limited warranty\* (48 months) or 500 hours, whichever occurs first. Unlimited hours during the first 2 years (24 months). Coil-over-shocks and all suspension related components are covered for 4 years (48 months) unlimited hours. Belts, tires, brake pads, battery, blades: 90 days.
- Limited lifetime warranty\* on 61" fabricated deck

\*See operator's manual for complete warranty details. Length of engine warranty coverage varies by manufacturer.



# Cobalt™ Zero Turn Series

## COLLECTION SYSTEM



### 28 hp w/61" TURBO-Pro Max™ Triple Collector

<b>Product No.</b>	<b>Description</b>	<b>List Price</b>
5600749	TURBO-Pro Max™ Blower and 3-Bag Soft Top Catcher (61)*	\$2,900.00

\*Includes mount and front weights.

NOTE: For a list of required attachments, see pages 68-79.

## Cobalt™ LE Zero Turn Series

<b>COBALT™ LE ZERO TURN</b>	<b>37/61</b>	<b>37/72</b>
Model Number	5901798	5901799
Engine	993cc Briggs & Stratton Vanguard™ Big Block V-Twin with EFI and Oil Guard™ System	
Power Rating	37.0 Gross HP*	37.0 Gross HP*
Transaxles	Hydro-Gear® ZT-5400	Hydro-Gear® ZT-5400
Ground Speed (mph) Fwd/Rev	0-12 / 0-6	0-12 / 0-6
Frame	11 Gauge Steel	11 Gauge Steel
Spindles	Cast Iron	Cast Iron
Mower Deck/Cutting Width (in.)	61"	72"
Mower Deck Steel	10 Gauge Steel	10 Gauge Steel
Mower Deck Lift	Manual - Foot Operated	Manual - Foot Operated
Anti-Scalp Wheels	3 Front, Rear Flap	3 Front, Rear Flap
Suspension	Front and Rear	Front and Rear
Seat	Suspension Seat	Suspension Seat
Rear Bumper	Wrap Around Steel	Wrap Around Steel
Front/Rear Tires (in.)	13x6.5 / 26x12-12	13x6.5 / 26x12-12
<b>MAP Price</b>	<b>\$13,399</b>	<b>\$14,099</b>

\*All Power Levels are Stated Gross Horsepower at 3600 RPM per SAE J1940 As Rated By Briggs & Stratton

## Cobalt™ LE Zero Turn Series



### KEY FEATURES

- Briggs and Stratton Vanguard available with EFI and Oil Guard™ system
- Innovative Oil Guard™ system features 500 hour oil change intervals providing increased productivity, lower maintenance and an extended engine life
- Adjustable Four-wheel suspension system for a smoother ride and faster cut
- Commercial-grade Hydro-Gear® ZT-5400® dual transaxles
- Ground Speed 0-12 mph
- Wide, 26" rear turf tread tires for a smooth ride and less turf damage
- Heavy-duty fabricated mower deck, for a lifetime of mowing
- Electric PTO switch
- 16-position height-of-cut adjustment allows you to adjust to specific height needs
- Extended run time with twin fuel tanks - 11 gallon capacity
- Operator comfort with superior suspension, high-back seats and arms rests
- Foldable roll over protection structure (ROPS)
- 4-year limited warranty\*
- Limited lifetime warranty on fabricated deck\*

\*See operator's manual for complete warranty details. Length of engine warranty coverage varies by manufacturer.

# Cobalt™ LE Zero Turn Series

## COLLECTION SYSTEM



### 37 hp w/61" TURBO-Pro Max™ Triple Collector

<b>Product No.</b>	<b>Description</b>	<b>List Price</b>
5600864	TURBO-Pro Max™ Blower and 3-Bag Soft Top Catcher (61")*	\$2,850.00

\*Includes mount and front weights.

NOTE: For a list of required attachments, see pages 68-79.

## Briggs & Stratton® Electric Pressure Washers

---

<b>Model Number</b>	<b>Description</b>	<b>M.A.P.</b>
020681	2000 MAX PSI* / 1.2 MAX GPM* Briggs & Stratton® Electric Pressure Washer	\$199.00
020667	2000 MAX PSI* / 3.5 MAX GPM* Briggs & Stratton® Electric Pressure Washer with PowerFlow+ Technology	\$229.00

## Briggs & Stratton® Gas Cleaning Systems

---

<b>Model Number</b>	<b>Description</b>	<b>M.A.P.</b>
020683	2800 MAX PSI* / 2.1 MAX GPM*	\$279.00
020685	3100 MAX PSI* / 2.5 MAX GPM*	\$349.00
020686	3000 MAX PSI* / 2.7 MAX GPM*	\$399.00
020661	3100 MAX PSI* / 2.5 MAX GPM* INSTANT	\$449.00
020725	3300 MAX PSI* / 2.5 MAX GPM*	\$549.00
020647	3600 MAX PSI* / 2.5 MAX GPM*	\$699.00
020507	4000 MAX PSI* / 4.0 MAX GPM*	\$899.00

\*This pressure washer is rated in accordance to the Pressure Washer Manufacturers' Association (PWMA) standard PW101-2010 (Testing and Rating Performance of Pressure Washers).

## Briggs & Stratton® Generators

---

<b>Model Number</b>	<b>Description</b>	<b>M.A.P.</b>
030746	3500 Running Watts*, 4375 Starting Watts**, Briggs & Stratton® 208cc OHV Engine, CO Guard™	\$549
030737	5000 Running Watts*, 6875 Starting Watts**, Briggs & Stratton® 306cc OHV Engine, CO Guard™	\$699
030738	5750 Running Watts*, 7188 Starting Watts**, Briggs & Stratton® 389cc OHV Engine, CO Guard™	\$749
030740	7000 Running Watts*, 8750 Starting Watts**, Briggs & Stratton® 420cc OHV Engine, CO Guard™	\$999
030742	8000 Running Watts*, 10000 Starting Watts**, Briggs & Stratton® 420cc OHV Engine, InfoHub™ Bluetooth® wireless, CO Guard™	\$1,199

## Briggs & Stratton® Generator Attachments

---

<b>Model Number</b>	<b>Description</b>	<b>M.A.P.</b>
6184	Display Stand	\$99

\*Per ANSI/PGMA G300-2015

\*\*This generator is rated in accordance with Briggs & Stratton® standard 628k.

## Briggs & Stratton® Inverter Generators

---

<b>Model Number</b>	<b>Description</b>	<b>M.A.P.</b>
030651	1700 Running Watts*, 2200 Starting Watts**, PowerSmart Series™ Inverter, Briggs & Stratton® 111cc OHV Engine	\$499
030545	2600 Running Watts*, 3000 Starting Watts**, PowerSmart Series™ Inverter, Briggs & Stratton® 171cc OHV Engine	\$899
030795	3700 Running Watts*, 4500 Starting Watts**, Quiet Power Technology™ Inverter, Briggs & Stratton® 224cc OHV Engine, CO Guard™	\$1,299
030675	5000 Running Watts*, 6500 Starting Watts**, Quiet Power Technology™ Inverter, Briggs & Stratton® 306cc OHV Engine	\$1,499

## Briggs & Stratton® Inverter Attachments

---

<b>Model Number</b>	<b>Description</b>	<b>M.A.P.</b>
6278	Inverter Parallel Kit	\$99

\*Per ANSI/PGMA G300-2015

\*\*This generator is rated in accordance with Briggs & Stratton® standard 628k.

## Briggs & Stratton® Single Stage Snowthrowers

---

<b>Model Number</b>	<b>Description</b>	<b>M.A.P.</b>
1697099	Single Stage, 18" Clearing Width, Briggs & Stratton 127cc Snow Series™ Engine, Recoil Start, Manual Chute Rotation, Quick Deflector	\$399
1697116	Single Stage, 22" Clearing Width, Briggs & Stratton 127cc Snow Series™ Engine, Recoil Start, Manual Chute Rotation, Quick Deflector	\$399
1696737	Single Stage, 22" Clearing Width, Briggs & Stratton 208cc Snow Series™ Engine, Recoil Start, Manual Chute Rotation, Quick Deflector	\$399
1696715	Single Stage, 22" Clearing Width, Briggs & Stratton 208cc Snow Series™ Engine, Electric Start, Manual Chute Rotation, Quick Deflector	\$429
1696727	Single Stage, 22" Clearing Width, Briggs & Stratton 208cc Snow Series™ Engine, Electric Start, Remote Chute Rotation, Quick Deflector	\$449
1696847	Single Stage, 22" Clearing Width, Briggs & Stratton 208cc Snow Series™ Engine, Electric Start, Remote Chute Rotation, Quick Deflector, SnowShredder™ Serrated Auger	\$599
1696741	Single Stage, 22" Clearing Width, Briggs & Stratton 250cc Snow Series™ Engine, Electric Start, Electric Chute Rotation, Quick Deflector, SnowShredder™ Serrated Auger, Headlights	\$699



## Briggs & Stratton® Dual Stage Snowthrowers

---

<b>Model Number</b>	<b>Description</b>	<b>M.A.P.</b>
1696610	Dual Stage, 24" Clearing Width, Briggs & Stratton 208cc Snow Series™ Engine, Electric Start, Friction Disc Drive, Left Side Crank Rotation, Manual Deflector	\$675
1696614	Dual Stage, 24" Clearing Width, Briggs & Stratton 208cc Snow Series™ Engine, Electric Start, Friction Disc Drive, Dash Mounted Rotation, Remote Deflector, LED Headlights	\$799
1696619	Dual Stage, 27" Clearing Width, Briggs & Stratton 250cc Snow Series™ Engine, Electric Start, Friction Disc Drive, Dash Mounted Rotation, Remote Deflector, LED Headlights	\$875
1696807	Dual Stage, 24" Clearing Width, Briggs & Stratton 208cc Snow Series™ Engine, Electric Start, Dual-Trigger Steering, Dash Mounted Rotation, Remote Deflector, LED Headlights, Heated Hand Grips	\$999
1696815	Dual Stage, 27" Clearing Width, Briggs & Stratton 250cc Snow Series™ Engine, Electric Start, Dual-Trigger Steering, Dash Mounted Rotation, Remote Deflector, LED Headlights, Heated Hand Grips	\$1,099
1696828	Dual Stage, 30" Clearing Width, Briggs & Stratton 306cc Professional Series™ Engine, Electric Start, Dual-Trigger Steering, Dash Mounted Rotation, Remote Deflector, LED Headlights, Heated Hand Grips	\$1,299

## Simplicity® Single Stage Snowthrowers

---

<b>Model Number</b>	<b>Description</b>	<b>M.A.P.</b>
1697098	Single Stage, 18" Clearing Width, Briggs & Stratton 127cc Snow Series™ Engine, Recoil Start, Manual Chute Rotation, Quick Deflector	\$399
1697115	Single Stage, 22" Clearing Width, Briggs & Stratton 127cc Snow Series™ Engine, Recoil Start, Manual Chute Rotation, Quick Deflector	\$399
1697143	Single Stage, 22" Clearing Width, Briggs & Stratton 208cc Snow Series™ Engine, Recoil Start, Manual Chute Rotation, Quick Deflector	\$399
1697142	Single Stage, 22" Clearing Width, Briggs & Stratton 208cc Snow Series™ Engine, Electric Start, Manual Chute Rotation, Quick Deflector	\$449
1697144	Single Stage, 22" Clearing Width, Briggs & Stratton 208cc Snow Series™ Engine, Electric Start, Remote Chute Rotation, Quick Deflector	\$499
1696854	Single Stage, 22" Clearing Width, Briggs & Stratton 208cc Snow Series™ Engine, Electric Start, Electric Chute Rotation, Quick Deflector, SnowShredder™ Serrated Auger, Headlights	\$599
1696755	Single Stage, 22" Clearing Width, Briggs & Stratton 250cc Snow Series™ Engine, Electric Start, Electric Chute Rotation, Quick Deflector, SnowShredder™ Serrated Auger, Headlights	\$699

## Simplicity® Dual Stage Snowthrowers

---

<b>Model Number</b>	<b>Description</b>	<b>M.A.P.</b>
<b>SELECT SERIES</b>		
1696811	Dual Stage, 24" Clearing Width, Briggs & Stratton 208cc Snow Series™ Engine, Electric Start, Heavy-Duty Friction Disc Drive with Dual-Trigger Steering, Dash Mounted Rotation, On-Panel Deflector Control, LED Headlights, Heated Hand Grips	\$999
1696819	Dual Stage, 27" Clearing Width, Briggs & Stratton 250cc Snow Series™ Engine, Electric Start, Heavy-Duty Friction Disc Drive with Dual-Trigger Steering, Dash Mounted Rotation, On-Panel Deflector Control, LED Headlights, Heated Hand Grips	\$999
1696832	Dual Stage, 30" Clearing Width, Briggs & Stratton 306cc Professional Series™ Engine, Electric Start, Heavy-Duty Friction Disc Drive with Dual-Trigger Steering, Dash Mounted Rotation, On-Panel Deflector Control, LED Headlights, Heated Hand Grips	\$1,399
<b>SIGNATURE SERIES</b>		
1696920	Dual Stage, 24" Clearing Width, Briggs & Stratton 306cc Professional Series™ Engine, Electric Start, Heavy-Duty Friction Disc Drive with Dual-Trigger Steering, 4-Way Electric Chute, Dual-LED Headlights, Heated Hand Grips	\$1,599
1696921	Dual Stage, 28" Clearing Width, Briggs & Stratton 420cc Professional Series™ Engine, Electric Start, Heavy-Duty Friction Disc Drive with Dual-Trigger Steering, 4-Way Electric Chute, Dual-LED Headlights, Heated Hand Grips	\$1,699
1696922	Dual Stage, 32" Clearing Width, Briggs & Stratton 420cc Professional Series™ Engine, Electric Start, Heavy-Duty Friction Disc Drive with Dual-Trigger Steering, 4-Way Electric Chute, Dual-LED Headlights, Heated Hand Grips	\$1,899

## Simplicity® Dual Stage Snowthrowers (cont'd)

---

<b>Model Number</b>	<b>Description</b>	<b>M.A.P.</b>
<b>SIGNATURE PRO SERIES</b>		
1696927	Dual Stage, 24" Clearing Width, Briggs & Stratton 420cc Professional Series™ Engine, Electric Start, Commercial-Grade Friction Disc Drive with Easy Turn™ Trigger Steering, 4-Way Electric Chute, Dual-LED Headlights, Heated Hand Grips	\$1,999
1696928	Dual Stage, 28" Clearing Width, Briggs & Stratton 420cc Professional Series™ Engine, Electric Start, Commercial-Grade Friction Disc Drive with Easy Turn™ Trigger Steering, 4-Way Electric Chute, Dual-LED Headlights, Heated Hand Grips	\$2,299
1696929	Dual Stage, 32" Clearing Width, Briggs & Stratton 420cc Professional Series™ Engine, Electric Start, Commercial-Grade Friction Disc Drive with Easy Turn™ Trigger Steering, 4-Way Electric Chute, Dual-LED Headlights, Heated Hand Grips	\$2,599
1696930	Dual Stage, 38" Clearing Width, Briggs & Stratton 420cc Professional Series™ Engine, Electric Start, Commercial-Grade Friction Disc Drive with Easy Turn™ Trigger Steering, 4-Way Electric Chute, Dual-LED Headlights, Heated Hand Grips	\$3,099



## 2020 SIMPLICITY® ATTACHMENTS & ACCESSORIES

REGENT™ LAWN TRACTORS				
	2691454	2691668	2691455	2691456
	<b>REGENT™</b>	<b>REGENT™</b>	<b>REGENT™</b>	<b>REGENT™ S</b>
	TRA, 38" ,23B&S, 49ST, DOM	TRA, 44" ,25B&S, 49ST, DOM	TRA, 42" FAB, 23B&S, 49ST, DOM	TRA, 48" FAB, 25B&S, 49ST, DOM
<b>CATCHER KITS (Requires Front Counter Weights)</b>				
Catcher, Clean Sweep Twin (6.5 Bushel Capacity)	1696752A	N/A	1696551A	N/A
Catcher, Clean Sweep Triple (10 Bushel Capacity)	N/A	1695594	N/A	1696462A*
Deck Boot Adapter	N/A	N/A	N/A	1696672A
Front Counter Weight	1691837SM	1691837SM	1691837SM	1691837SM
Turbo	1696450A - OPT.	1696450A - OPT.	N/A	1696750A - OPT.
Turbo Spacer Kit <b>(Required)</b> with Turbo	1696781	N/A	N/A	N/A
*Requires 1696672A turbo-less boot or 1696750A turbo.				
<b>MULCH KITS</b>				
Mulch Kit	1692883SM	1694957SM	1696915	1696909
<b>SNOWTHROWERS (Requires Tire Chains / Rear Weights)</b>				
Single Stage 42" Snowthrower (Includes Hitch & Lift Lever)	1696423	1696423	1696423	1696423

<b>REGENT™ LAWN TRACTORS (continued)</b>					
	2691454	2691668	2691455	2691456	2691669
<b>SNOW/DOZER BLADE (Requires Tire Chains / Rear Weights)</b>					
42" Snow Blade (Includes Hitch & Lift Lever)	1696092A	1696092A	1696092A	1696092A	1696092A
<b>TIRE CHAINS/REAR WEIGHTS</b>					
Tire Chains	1690163SM	1695092SM	24515MA	1695092SM	1695092SM
Rear Weight Carrier	1694922SM	1694922SM	1694922SM	1694922SM	1694922SM
Quick Attach Weight, 33 lbs (2 Recommended, Requires Rear Carrier)	1691319SM	1691319SM	1691319SM	1691319SM	1691319SM
<b>OPTIONAL SNOW ACCESSORIES / WHEEL WEIGHTS</b>					
Snow Cab, Soft Side	1694921	1694921	1694921	1694921	1694921
Rear Wheel Weights, 31 lbs each (2 Required)	1690555SM	1690555SM	1690555SM	1690555SM	1690555SM
<b>UTILITY</b>					
Detacher, 40" Tow Behind	1695641YP	1695641YP	1695641YP	1695641YP	1695641YP
Dump Cart, 10 cu. Ft.	1692125	1692125	1692125	1692125	1692125
Tiller, 36" Gas Powered Tow Behind	1695791	1695791	1695791	1695791	1695791
Tractor Cover	7600071YP	7600071YP	7600071YP	7600071YP	7600071YP
Arm Rest Kit	1687810YP	1687810YP	1687810YP	1687810YP	1687810YP
<b>BOX MOWER KIT</b>					
Mower Deck Assembly	1696939	1696941	1696940	1696942	1696942

## 2020 SIMPLICITY® ATTACHMENTS & ACCESSORIES

BROADMOOR™ LAWN TRACTORS					
	2691670	2691671	2691672	2691673	2691674
	<b>BROADMOOR™</b>	<b>BROADMOOR™</b>	<b>BROADMOOR™</b>	<b>BROADMOOR™ SCS™</b>	<b>BROADMOOR™ SCS™</b>
	TRA, 44", 23B&S, 49ST, DOM	TRA, 48FAB, 23B&S, 49ST, DOM	TRA, 50", 25B&S, 49ST, DOM	TRA, 48FAB, 25B&S, 49ST, DOM	TRA, 52FAB, 25B&S, 49ST, DOM
<b>CATCHER KITS (Requires Front Weights)</b>					
Catcher, Triple (10 Bushel Capacity)	1696358A	1696358A	1696358A	1696358A	N/A
Deck Boot Adapter	N/A	N/A	N/A	1696672A	N/A
Turbo	1696450A - OPT.	1696750A - OPT.	1696450A - OPT.	1696750A - OPT.	N/A
<b>PREMIUM CATCHER KITS (Requires Front Weights)</b>					
Premium Catcher, Triple (10 Bushel Capacity)	1696363A	1696363A	1696363A	1696363A	1696363A
Catcher Hitch Group	1696356	1696356	1696356	1696356	1696356
Turbo	1696450A - REQ'D	1696750A - REQ'D	1696450A - REQ'D	1696750A - REQ'D	1696429 - REQ'D
<b>FRONT WEIGHT KITS (Required with Catcher)</b>					
Front Weight Carrier	1694155SM	1694155SM	1694155SM	1694155SM	1694155SM
Quick Attach Weight, 50 lbs (2 Recommended, Req Front or Rear Carrier)	1692939SM	1692939SM	1692939SM	1692939SM	1692939SM
<b>MULCH KITS</b>					
Mulch Kit	1694957SM	1696909	1696938SM	1696909	1696384YP
<b>WIDE BODY CART COLLECTOR</b>					
Wide Body Cart Collector (17 Bushel Capacity)	1694542*	1694542*	1694542*	1694542*	1694542*
Hitch & Tube Kit	1696361	1696361	1696361	1696361	1696361
Turbo	1696450A	1696750A	1696450A	1696750A	1696429

\*Requires turbo.



		<b>BROADMOOR™ LAWN TRACTORS (continued)</b>			
		2691670	2691671	2691672	2691673
<b>SNOWTHROWERS (Requires Tire Chains/Rear Weights, Subframe and Hitch)</b>					
Single Stage 42" Snowthrower	← CHOOSE ONE	1696425	1696425	1696425	1696425
Two-Stage 42" Snowthrower		1695360	1695360	1695360	1695360
Subframe & Hitch		1695196	1695196	1695196	1695196
Lift Lever		1694947	1694947	1694947	N/A
<b>SNOW/DOZER BLADE (Requires Tire Chains/Rear Weights, Subframe and Hitch)</b>					
48" Snow/Dozer Blade		1695939	1695939	1695939	1695939
Hitch		1694147	1694147	1694147	1694147
Subframe		1695195	1695195	1695195	1695195
Lift Lever		1694947	1694947	1694947	N/A
<b>TIRE CHAINS/WEIGHTS</b>					
Tire Chains		1695092SM	1695092SM	1695092SM	1690095SM
Rear Weight Carrier		1696323YP	1696323YP	1696323YP	1696323YP
Quick Attach Weight, 33 lbs (Req. front or rear weight carrier)		1691319SM	1691319SM	1691319SM	1691319SM
Quick Attach Weight, 50 lbs (2 Recommended, Requires Rear Carrier)		1692939SM	1692939SM	1692939SM	1692939SM
<b>OPTIONAL SNOW ACCESSORIES / WHEEL WEIGHTS</b>					
Snow Cab, Soft Side		1695613	1695613	1695613	1695613
Rear Wheel Weights, 31 lbs each (2 Required)		1690555SM	1690555SM	1690555SM	1695092YP
<b>UTILITY</b>					
Cut & Sew High Back Seat w/ Armrest Kit		N/A	N/A	N/A	1688085
Delhatcher, 40" Tow Behind		1695641YP	1695641YP	1695641YP	1695641YP
Tiller, 36" Gas Powered Tow Behind		1695791	1695791	1695791	1695791
<b>BOX MOWER KIT</b>					
Mower Deck Assembly		1696445	1696805	1696446	1696805

## 2020 SIMPLICITY® ATTACHMENTS & ACCESSORIES

	CONQUEST™ GARDEN TRACTORS		PRESTIGE™ GARDEN TRACTORS	
	2691675	2691676	2691677	2691678
	CONQUEST™ SCS™		PRESTIGE™ SCS™	
	TRA, 50", 25B&S, 49ST, DOM	TRA, 52FAB, 25B&S, 49ST, DOM	TRA, 50", 27B&S, 49ST, DOM	TRA, 52FAB, 27B&S, 49ST, DOM
<b>CATCHER KITS (Requires Front Weights)</b>				
Catcher, Triple (10 Bushel Capacity)	1696358A	N/A	1696358A	N/A
<b>PREMIUM CATCHER KITS (Requires Front Weights)</b>				
Premium Catcher, Triple (10 Bushel Capacity)	1696363A	1696363A	1696363A	1696363A
Catcher Hitch Group	1696356	1696356 - REQUIRED	1696356 - REQUIRED	1696356 - REQUIRED
Turbo	1696450A - REQUIRED	1696429 - REQUIRED	1696450A - REQUIRED	1696429 - REQUIRED
<b>FRONT WEIGHT KITS (Required with Catcher)</b>				
Front Weight Carrier	1694155SM	1694155SM	1694155SM	1694155SM
Quick Attach Weight, 50 lbs (2 Recommended, Requires Front Carrier)	1692939SM*	1692939SM*	1692939SM*	1692939SM*
<b>MULCH KITS</b>				
Mulch Kit	1696938	1696384YP	1696938	1696384YP
<b>WIDE BODY CART COLLECTOR</b>				
Wide Body Cart Collector (17 Bushel Capacity)	1694542	1694542	1694542	1694542
Hitch & Tube Kit	1696938	1696938	1696938	1696938
Turbo	1696450A - REQUIRED	1696429 - REQUIRED	1696450A - REQUIRED	1696429 - REQUIRED

	<b>CONQUEST™ GARDEN TRACTORS (continued)</b>	<b>PRESTIGE™ GARDEN TRACTORS (continued)</b>
	2691675	2691677
	2691676	2691678
<b>SNOWTHROWERS (Requires Tire Chains/Rear Weights)</b>		
Single Stage 42" Snowthrower	1696425	1696425
Two-Stage 42" Snowthrower	1695360	1695360
Subframe & Hitch	1695196 - REQUIRED	1695196 - REQUIRED
<b>SNOW/DOZER BLADE (Requires Tire Chains/Rear Weights)</b>		
48" Snow/Dozer Blade	1695939	1695939
Hitch	1694147 - REQUIRED	1694147 - REQUIRED
Subframe	1695195 - REQUIRED	1695195 - REQUIRED
<b>TIRE CHAINS/REAR WEIGHTS</b>		
Tire Chains	1690095SM	N/A
Rear Weight Carrier	1696323YP	1696323YP
Quick Attach Weight, 33 lbs (2 Recommended, Requires Front or Rear Carrier)	1691319SM	1691319SM
Quick Attach Weight, 50 lbs (2 Recommended, Requires Front or Rear Carrier)	1692939SM	1692939SM
<b>OPTIONAL SNOW ACCESSORIES/WHEEL WEIGHTS</b>		
Snow Cab, Soft Side	1695613	1695613
Rear Wheel Weights, 50 lbs each (2 Required)	1693160SM	1693160SM
<b>UTILITY</b>		
Cut & Sew High Back Seat w/ Armrests Kit	1688085	Standard
Dump Cart, 10 cu. Ft.	1692125	1692125
<b>BOX MOWER KIT</b>		
Mower Deck Assembly	1696446	1696446

## 2020 SIMPLICITY® ATTACHMENTS & ACCESSORIES

LEGACY® XL GARDEN TRACTORS®				
	2691522	2691523	2691524	1696699
	<b>LEGACY® XL</b> TRA, 31 B&S, 49 ST	<b>LEGACY® XL 4WD</b> TRA, 33B&S, 49 ST	<b>LEGACY® XL 4WD</b> TRA, 33B&S, 540, 49 ST	<b>LEGACY® XL MOWER DECK</b> 61" FAB, DRIVE OVER
				<b>LEGACY® XL MOWER DECK</b> 52" FAB
<b>CATCHER KITS (Requires Front Weights)</b>				
Catcher, Triple (10 Bushel Capacity)				1694389A
Catcher Hitch, Tube Group				1694390 - REQUIRED
Turbo				1696366 - REQUIRED
<b>FRONT WEIGHT KITS (Required with Catcher)</b>				
Front Weight Carrier	1694409SM	1694409SM	1694409SM	1694409SM
Quick Attach Weight, 50 lbs (2 Recommended, Requires Front or Rear Carrier)	1692939SM	1692939SM	1692939SM	1692939SM
<b>MULCH KITS</b>				
Mulch Kit				5600580YP
<b>WIDE BODY CART COLLECTOR</b>				
Wide Body Cart Collector (17 Bushel Capacity)				1694542
Hitch & Tube Kit (Required)				1694545
Turbo (Required)				1696366
<b>SNOWTHROWERS (Requires Tire Chains, Rear Weights, Subframe &amp; Hitch)</b>				
Two-Stage 47" Snowthrower	1696422	1696422	1696422	1696422
Subframe & Hitch	1694395	1694395	1694395	1694395

<b>LEGACY® XL GARDEN TRACTORS (continued)</b>		
	2691522	2691523 2691524
<b>SNOW/DOZER BLADE (Requires Tire Chains / Rear Weights)</b>		
60" Snow/Dozer Blade	1694387	1694387 1694387
Subframe & Hitch (Required with blade)	1694395	1694395 1694395
<b>TIRE CHAINS/ REAR WEIGHTS</b>		
Tire Chains	1692562SM	1692562SM 1692562SM
Quick Attach Weight, 50 lbs (2 Recommended, Requires Front or Rear Carrier)	1692939SM	1692939SM 1692939SM
Quick Attach Weight, 33 lbs (2 Recommended, Requires Front or Rear Carrier)	1691319SM	1691319SM 1691319SM
Ballast Box, 350 lb.	1697276	1697276 1697276
Rear Weight Carrier	1692941SM	1692941SM 1692941SM
<b>OPTIONAL SNOW ACCESSORIES / WHEEL WEIGHTS</b>		
Snow Cab, Soft Side (2691325, 2691326, 2691415 & older)	1696679	1696679 1696679
Snow Cab, Soft Side (2691522, 2691523, 2691524 & newer)	1697130	1697130 1697130
Rear Wheel Weights, 50 lbs each (2 Required)	1693160SM	1693160SM 1693160SM
<b>UTILITY</b>		
Dump Cart, 10 cu. Ft.	1692125	1692125 1692125
Backhoe (Requires 48" Front Loader)	1697158	1697158 1697158
PTO / Box Scraper, 48"	1696071 / 1694551	1696071 / 1694551 Standard / 1694551
Broom, 60" / Broom Drive Shaft	1694388* / 1694560	1694388* / 1694560 1694388* / 1694560
Hitch 3-Point / Front-End Loader	1694391 / 1696678	Standard / 1696678 Standard / 1696678
Rear Scraper Blade, 60" / Tiller, 50"	1695709** / 1694405***	1695709** / 1694405*** 1695709** / 1694405***
*Requires 1694395 Subframe and Hitch, 1694560 Broom Drive Shaft. **Requires 1694391 Hitch, 1694409SM Front Weight Carrier, (4) 1692939SM Weights & 169439 3 Point Hitch ***Requires 1696071 PTO, 1694391 Hitch, 1694409SM Front Weight & Carrier, (4) 1692939SM Weights		

## 2020 SIMPLICITY® ATTACHMENTS & ACCESSORIES

ZERO TURN MOWERS			
	2691501	2691519	2691502
	<b>COURIER™</b>		
	ZT, 36", 19B&S, 49ST, DOM	ZT, 36", 23B&S, 49ST, DOM	ZT, 44", 23B&S, 49ST, DOM
	ZT, 36", 18KAW, 49ST, DOM		
<b>CATCHER KITS</b>			
Catcher, Clean Sweep Twin (6.5 bushel capacity, Includes front counter weights)	1697100	1697100	1697100
Catcher Mounting Kit (Single Cylinder)	1697106	N/A	N/A
Deck Boot Adapter	1697101	1697101	1696670A
<b>MULCH KITS</b>			
Mulch Kit	1697102	1697102	1694957SM
<b>UTILITY</b>			
Cargo Bed Kit	N/A	1697103	1697103
Hitch Kit	1697106	Standard	Standard
Dump Cart 10 cu ft.	1692125	1692125	1692125
Extended Engine Protect Kit	N/A	1696687YP	1696687YP
LED Light Kit	1697104	1697104	1697104
Seat Kit, 15" Vinyl Seat w/Armrests	1687857	1687857	1687857
Rhino Grip Single - (Kolpin 21500)	N/A	1687855YP	1687855YP
Ratcheting Rhino Grip - (Kolpin 21540)	N/A	1687856YP	1687856YP

<b>ZERO TURN MOWERS</b>						
	2691657	2691658	2691659	2691660	2691661	2691662
				<b>COURIER™</b>		
	42", 23B&S, 49ST	42", 21.5KAW, 49ST	48", 23B&S, 49ST	48", 21.5KAW, 49ST	52", 25B&S, 49ST	52", 21.5KAW, 49ST
	1697100	1697100	1697100	1697100	1697100	1697100
Catcher, Clean Sweep Twin (6.5 Bushel Capacity, Includes Front Counter Weights)						
Deck Boot Adapter	1696669A	1696669A	1696672A	1696672A	N/A	N/A
Turbo	N/A	N/A	N/A	N/A	1696768A	1696768A
	1696915	1696915	1696909	1696909	1696384YP	1696384YP
	1697103	1697103	Standard	Standard	Standard	Standard
Cargo Bed Kit						
Dump Cart. 10 cu. Ft.	1692125	1692125	1692125	1692125	1692125	1692125
Extended Engine Protect Kit	1696687YP	1696687YP	N/A	N/A	N/A	N/A
Light Kit	1697104	1697104	1697104	1697104	1697104	1697104
Seat Kit, 15" Vinyl Seat w/ Armrests	1687857	1687857	1687857	1687857	1687857	1687857
Rhino Grip Single - (Kolpin 21500)	1687855YP	1687855YP	1687855YP	1687855YP	1687855YP	1687855YP
Ratcheting Rhino Grip - (Kolpin 21540)	1687856YP	1687856YP	1687856YP	1687856YP	1687856YP	1687856YP
Hitch Kit	Standard	Standard	Standard	Standard	Standard	Standard

## 2020 SIMPLICITY® ATTACHMENTS & ACCESSORIES

ZERO TURN MOWERS					
	5901742	5901743	5901744	5901779	5901780
	<b>CONTENDER™ XT</b> ZT, 48", 25B&S, 49ST	<b>CONTENDER™ XT</b> ZT, 52", 25B&S, 49ST	<b>CONTENDER™ XT</b> ZT, 61", 27B&S, 49ST	<b>CITATION® XT</b> ZT, 52", 27 B&S, 49ST DOM	<b>CITATION® XT</b> ZT, 61", 27 B&S, 49ST, DOM
<b>TURBO-PRO CATCHER KITS</b>					
Catcher, TURBO-Pro Twin (Includes TURBO-Pro Blower, mount and front weights)	5600778	5601095	5601161	N/A	N/A
Catcher, TURBO-Pro Triple (Includes TURBO-Pro Blower, mount and front weights)	N/A	N/A	N/A	5600783	5600784
<b>MULCH KITS</b>					
Mulch Kit	5601096	5600584YP	5600898	5600584YP	5600898
<b>UTILITY</b>					
Arm Rest Kit	Standard	Standard	Standard	Standard	Standard
Flat Free Caster Tire Kit	5023279YP	5023279YP	5023279YP	5023279YP	5023279YP
Hitch Kit	N/A	N/A	N/A	5600031SM	5600031SM
Light Kit	5600647	5600647	5600891	5600891	5600891
Suspension Seat Kit	N/A	N/A	5106320	5107346	5107346



<b>ZERO TURN MOWERS</b>			
	5901597	5901748	5901798
	<b>COBALT™</b>		<b>COBALT™ LE</b>
	ZT, 61" 26 B&S EFI, 49ST, DOM	ZT, 61" , 28 B&S EFI, 49ST, DOM	ZT, 72" , 37 B&S EFI, 49ST, DOM
	<b>TURBO-PRO CATCHER KITS</b>		
	Catcher, TURBO-Pro™ Triple (Includes TURBO-Pro Blower, mount and front weights)		
	5600749	5600749	5600864
	<b>MULCH KITS</b>		
	5600898	5600898	5600898
	<b>UTILITY</b>		
	Standard	Standard	Standard
	5023279YP	5023279YP	5023279YP
	5600031SM	5600031SM	5600860
	5600891	5600891	5600891
	5106325	Standard	Standard

## Allied Attachments & Accessories

Following is a list of manufacturers that provide attachments and accessories that may be compatible with Simplicity® lawn and garden tractors.

Because of the large number of items available, we are not able to review their compatibility, performance and design like we do with our standard attachments.

Dealers are requested to make their own contact and arrangements with the manufacturers listed. It is the **dealer's** responsibility to work with the attachment manufacturer to determine the suitability of an attachment's use with the product, both from a safety and reliability standpoint. Upon contact with attachment manufacturers, make certain warranty, parts and service issues are covered.

<b>MANUFACTURER</b>	<b>ATTACHMENTS</b>
<p><b>Agri-Fab, Inc.</b> 303 W. Raymond St. Sullivan, IL 61951 (217) 728-8388 (217) 728-2032 Fax www.agri-fab.com</p>	<p>Lawn Sweeps Lawn Roller Lawn Aerator Tine Dethatcher Gang Mowers Broadcast Spreader</p>
<p><b>BEFCO, Inc.</b> Hwy. 301S P.O. Box 6036 Rocky Mount, N.C. 27802 (252) 977-9020 or (800) 334-6617 (252) 977-9718 Fax www.befco.com</p>	<p>Parts for rear scaper blade 50" Rear Tiller - #1692935 #1693448 Shaft-Driven Rear-Mount Finish Mowers Rear-Mount Flail Mowers</p>
<p><b>Brinly Hardy Co.</b> 3230 Industrial Pkwy Jeffersonville, IN 47130 (800) 626-5329 see distributor listing for contact, pricing www.brinly.com</p>	<p>Lawn Rollers - shown in full line catalog Lawn Sweeps - shown in full line catalog Lawn Aerators - shown in full line catalog Broadcast Spreaders - shown in full line cat. Planter w/fertilizer attach. Tool Bar Kits 42" Reversible Blade Dethatchers - shown in full line catalog</p>

**MANUFACTURER****ATTACHMENTS****Femco, Inc.**

500 North 81 Bypass  
P.O. Box 1186  
McPherson, KS 67460  
(620) 241-3513 or  
(800) 677-0898  
(620) 241-3532 Fax  
www.femcomfg.com  
email: femco@femcomfg.com

Roll Over Protective Structures  
Parts for Simplicity ROPS  
#1692927  
Parts for Discontinued  
Simplicity  
Hard Cab #1692933  
Cabs & Canopies  
Electric Wiper Mounts for:  
Hard Cab  
Light Packages Hard Cab

**Kasco Manufacturing Co., Inc.**

170 West 600 North  
Shelbyville, IN 46176  
800-458-9129  
www.kascomfg.com/  
info@kascomfg.com

Electric Driven Broadcast  
Seeder  
Broadcast Seeders

**Howse Implement Company INC.**

P.O. Box 86  
Laurel, MS 39441  
2013 Hwy 184  
East Laurel, MS 39443  
(601) 428-0841 or  
(601) 425-4900 Fax  
www.howseimplement.com  
email: howse@c-gate.net

Single Disk Harrow – shown  
in catalog  
Moldboard Plow – shown  
in catalog

**JRCO, Inc.**

P.O. Box 41304  
Minneapolis, MN 55441  
(763) 535-7200 or  
(800) 966-8442  
(763) 535-9553 Fax  
www.jrcoinc.com  
email: info@jrcoinc.com

Front Dethatcher for previous  
Legacy Series, Sovereign  
Rear-Mounted Bucket Grass  
Collection Systems  
Tow Behind Dethatcher  
Rear Scoop "Scoop-Tote"

**HitchDoc**

131 County Road 34E  
P.O. Box 179  
Jackson, MN 56143  
(800) 446-8222  
www.hitchdoc.com  
email: questions@hitchdoc.com

Front End Loader for Legacy,  
Legacy® XL, and Parts for  
loaders, backhoes and  
box scrapers

**MANUFACTURER****ATTACHMENTS**

---

**Ohio Steel Industries, Inc.**

2575 Ferris Road  
Columbus, OH 43224-2597  
(614) 471-4800  
(614) 471-1190 Fax  
www.ohiosteel.com

Aerators  
Lawn Rollers  
Spreaders  
Dump Carts

---

**Original Tractor Cab**

P.O. Box 97  
Arlington, IN 46104  
(765) 663-2214  
(800) 247-5305  
www.originalcab.com

Tractor Cabs  
Accessories for Soft Side  
Simplicity Cabs  
Tractor Sunshades

---

**Palmor Products**

P.O. Box 38  
Thorntown, IN 46071  
(800) 872-2822 or  
(317) 436-2496  
www.trac-vac.com  
email: palmor@trac-vac.com

Trac Vac Large Capacity  
Tow-Behind Collection  
Systems (same as #1691620  
and #1691987)

---

**PeCo**

P.O. Box 1197  
100 Airport Rd.  
Arden, NC 28704  
(828) 684-1234  
(800) 438-5823  
(828) 684-0858 Fax  
www.lawnvac.com  
email: peco@iao.com

Homeowner Trailer Vacs  
Professional Trailer Vacs

---

**Precision Products**

316 Limit Street  
Lincoln, IL 62656  
(217) 735-1590  
(800) 225-5891  
www.precisionprodinc.com

Dump Cart

---

**Spyker Spreaders LLC**

140 Mill Street  
Urbana, IN 46690  
(800) 977-6130  
(260) 774-3416 Fax  
www.spyker.com  
email: sales@spyker.com

Broadcast Spreaders

---

**MANUFACTURER****ATTACHMENTS**

---

**Sweepster  
Jenkins Eqt. Co., Inc.**

2800 N. Zeeb Rd.  
Dexter, MI 48130  
(734) 996-9116 or  
(800) 456-7100  
(734) 996-9014 Fax  
www.sweepster.com  
email: sweep@sweepster.com

Power Rotary Sweepers  
Leaf Sweepers  
Parts for Simplicity 60"  
Broom #1693246

**Woods Equipment Co.**

2606 Illinois Route 2 South  
P.O. Box 1000  
Oregon, IL 61061  
(866) 869-6637 or  
(815) 732-2141  
(815) 732-7580 Fax  
www.woodsonline.com  
email: info@woodsonline.com

Shaft-Driven Rear-Mount  
Finish Mowers

**WorkSaver, Inc.**

P.O. Box 100  
9 Worksaver Trail  
Litchfield, IL 62056  
(217) 324-5973  
(217) 324-3356 Fax  
www.worksaver.com

Seeder-Spreader  
Landscape Rakes

**York**

P.O. Box 488  
Unadilla, NY 13849  
(607) 369-7111 or  
(800) 643-YORK (9675)  
(607) 369-2625 Fax  
www.yorkmodern.com  
email: sales@yorkmodern.com

Pull-Behind Adjustable Rakes  
Scarifier  
3 Pt. Mounted Rakes













All Briggs & Stratton® and Vanguard® engine power levels are stated gross horsepower at 3600rpm per SAEJ1940 as rated by Briggs & Stratton.

Only Kawasaki Critical Power engines listed in this brochure have been tested in accordance with SAE J1995, verified by TÜV Rheinland Group, horsepower-rated in accordance with SAE J2723, and certified by SAE International. Torque ratings of these engines were not certified by SAE. Actual power and torque output will vary depending on numerous factors, including, but not limited to, the operating speed of the engine in application, environmental conditions, maintenance, and other variables.

See operator's manual or [www.simplicitymfg.com](http://www.simplicitymfg.com) for complete warranty details. Length of engine warranty coverage varies by manufacturer.

Briggs & Stratton has a policy of continuous product improvement and reserves the right to modify its specifications at any time and without prior notice. Product may vary from images shown.



Effective 2/1/2020

200001

**BRIGGS&STRATTON** CORPORATION  
POST OFFICE BOX 702  
MILWAUKEE, WI 53201-0702  
Copyright ©2020. All rights reserved.